

# WHARRY

## CATALOG

### EFFECT PEDALS & AMPLIFICATION

#### 2023/2024





## NEW PRODUCTS 3

## PEDALS FOR ELECTRIC GUITAR 4

DUNLOP (INCL. CRY BABY)	5
MXR	11
WAY HUGE	21
MAD PROFESSOR	24
FENDER	26
MOOER	32
XVIVE	37
SEYMOUR DUNCAN	40

## PEDALS FOR BASS GUITAR 42

CRY BABY	43
MXR	43
WAY HUGE	45
MAD PROFESSOR	45
FENDER	45
MOOER	45
XVIVE	45
SEYMOUR DUNCAN	45

## PERCUSSION PEDALS 47

LOGJAM	48
--------	----

## AMPLIFICATION 49

FENDER	50
GODIN	50

## AMP HEADS 51

MOOER	51
-------	----

## PEDALBOARD 52

FENDER	53
XVIVE	54
SKB	54

## PEDALS PER EFFECT 55



# NEW 2023

## MXR



**WA44 WYLDE AUDIO  
OVERDRIVE**  
p. 21



**WA38 WYLDE AUDIO  
CHORUS**  
p. 21



**WA90 WYLDE AUDIO  
PHASE**  
p. 21

## MAD PROFESSOR



**EVOLUTION ORANGE  
UNDERDRIVE (EOU)**  
p. 24



**ROYAL BLUE OVERDRIVE  
(RBO)**  
p. 24



**THE GREEN WONDER  
OVERDRIVE (TGW)**  
p. 24



**SWEET HONEY OVERDRIVE  
(SHO)**  
p. 24



**DEEP BLUE DELAY  
(DBD)**  
p. 24



**FORREST GREEN  
COMPRESSOR (FGC)**  
p. 24



**SNOW WHITE AUTO WAH  
GB (SAW)**  
p. 24 & p. 45



**SILVER SPRING REVERB  
(SSR)**  
p. 24



**SUPER BLACK  
(SB)**  
p. 25



**SUPREME MATT  
SCHOFIELD (SMS)**  
p. 25





# ELECTRIC GUITAR





**FUZZ FACE® THE  
STANDARD RED  
DISTORTION**

**Art. N°: JD-F2  
RRP CHF 200.00**

- The classic fuzz box used by legendary rockers of the '60s and '70s
- Built to the exact specs of the original Dallas-Arbitrator Fuzz Face pedal
- Warm germanium tones



**SILICON FUZZ  
FACE® MINI  
DISTORTION**

**Art. N°: FFM1  
RRP CHF 176.00**

- Legendary Fuzz Face tone with pedalboard-friendly size, AC power and on/bypass status LED
- Spec'd from our own prized 1970 Fuzz Face pedal
- Bright, aggressive sounding BC108 transistors
- True bypass



**GERMANIUM FUZZ  
FACE® MINI  
DISTORTION**

**Art. N°: FFM2  
RRP CHF 176.00**

- Legendary Fuzz Face tone with pedalboard-friendly size, AC power & on/bypass status LED
- Based on '66-'68 era pre-silicon Fuzz Face pedals
- Warm vintage fuzz tones provided by slightly mismatched germanium transistors
- True bypass



**ECHOPLEX®  
PREAMP**

**Art. N°: EP101  
RRP CHF 176.00**

- The EP-3's legendary tone conditioning mojo in a Phase 90-sized box
- Adds up to +11dB of gain
- Smooth breakup at higher gain levels
- True Bypass



**ECHOPLEX®  
DELAY**

**Art. N°: EP103EU  
RRP CHF 235.00**

- Vintage Echoplex EP-3 tape echo warmth and modulation
- Hi-fi audio paths with 100% analog dry path
- Studio-grade low noise floor
- Age control varies delay tone from pristine to dark and dirty
- Delay control provides 65-750ms of delay time; MXR Tap Tempo Switch (not included) provides up to 4s



**ROTOVIBE®  
CHORUS/VIBRATO**

**Art. N°: JD-4S  
RRP CHF 352.00**

- Rotating speaker simulator recreates "shimmering" tones
- Popularized by many artists, including Jimi Hendrix
- Select Chorus or Vibrato modes with adjustable intensity



**VOLUME (X) &  
EXPRESSION PEDAL**

**Art. N°: DVP3  
RRP CHF 165.00**

- Control your volume levels or effects pedals with exacting precision
- Patented Low Friction Band-Drive for highly reliable action
- Fully adjustable rocker tension



**VOLUME (X) MINI &  
EXPRESSION PEDAL**

**Art. N°: DVP4  
RRP CHF 165.00**

- Controls volume and FX pedals with precision
- Patented Low Friction Band-Drive for durable action
- Fully adjustable rocker tension
- Perfect size for travel boards


**VOLUME (X) 8 LOW  
FRICTION BAND-  
DRIVE**

**Art. N°: DVP5**  
**RRP CHF 165.00**

- Designed with Pedaltrain for tight layouts & tidy routing of cords
- 8" length for perfect alignment with Metro, Classic, Novo, and Terra Series pedalboards
- Create incredibly smooth volume swells or control your favorite FX parameters
- Patented Low Friction Band-Drive for long-lasting performance.
- Features Volume, FX, Output, and Tuner jacks.


**BAND OF GYPSYS  
FUZZ FACE MINI®  
DISTORTION**

**Art. N°: FFM6**  
**RRP CHF 200.00**

- The biting, aggressive fuzz tone used by Jimi Hendrix for the Band of Gypsies show and other iconic performances
- Pedalboard-friendly Fuzz Face Mini housing with AC power and on/off status LED
- True bypass


**JIMI HENDRIX™  
FUZZ FACE® MINI  
DISTORTION**

**Art. N°: FFM3**  
**RRP CHF 200.00**

- Legendary Fuzz Face tone with pedalboard-friendly size, AC power and on/bypass status LED
- Featuring the same circuit as the JHF1 in a smaller housing
- Get the thick, smooth Fuzz Face tone that Jimi Hendrix made famous
- True bypass


**JIMI HENDRIX™  
SIGN. FUZZ FACE®  
DISTORTION**

**Art. N°: JH-F1**  
**RRP CHF 200.00**

- Meticulously faithful reproduction of Jimi's 1969-70 Dallas-Arbiter Fuzz Face pedal
- Built around the toneful BC108 silicon transistor
- True Bypass


**JOE BONAMASSA  
FUZZ FACE® MINI  
DISTORTION**

**Art. N°: FFM4**  
**RRP CHF 200.00**

- Hand-wired with Russian military germanium transistors
- Pedalboard-friendly size, AC power and on/bypass status LED
- Rich black gloss finish
- True bypass

**cry baby STANDARD**

**CRY BABY® JUNIOR  
WAH SPECIAL  
WHITE EDITION**

**Art. N°: CBJ95SW**  
**RRP CHF 153.00**

- Combined the classic Cry Baby 'rocker housing' silhouette with a bold Cry Baby 'wave logo' pattern and contrasting footwear-inspired tread
- Designed in collaboration with Pedaltrain
- On the side of the pedal is a convenient & accessible 3-position switch that allows you to choose one of our three most popular Cry Baby Wah voices, covering the full frequency spectrum.


**CRY BABY® JUNIOR  
WAH SPECIAL  
BLACK EDITION**

**Art. N°: CBJ95SB**  
**RRP CHF 153.00**

- Combined the classic Cry Baby 'rocker housing' silhouette with a bold Cry Baby 'wave logo' pattern and contrasting footwear-inspired tread
- Designed in collaboration with Pedaltrain
- On the side of the pedal is a convenient & accessible 3-position switch that allows you to choose one of our three most popular Cry Baby Wah voices, covering the full frequency spectrum.


**CRY BABY® JUNIOR  
WAH**

**Art. N°: CBJ95**  
**RRP CHF 153.00**

- Designed with Pedaltrain for tight layouts and tidy routing of cords
- Front-mounted input, output, & power jacks
- 8" length for perfect alignment with Metro, Classic, Novo, and Terra Series pedalboards
- Switch between high, mid, and low Cry Baby Wah voices
- Convenient on/off status led shows when effect is engaged



**CRY BABY® MINI  
WAH**

**Art. N°: CBM95**  
**RRP CHF 141.00**

- Half the size of a standard Cry Baby pedal—perfect for mini boards
- Three internally adjustable voicings—Low, Middle (vintage), and High (modern)
- Full sweep range
- True bypass switching



**CRY BABY®  
ORIGINAL WAH**

**Art. N°: GCB-95**  
**RRP CHF 119.00**

- Red Fasel Inductor for focused highs and an aggressive response
- Lush, expressive character
- The definitive modern interpretation of a classic effect
- For players who want a straight-up no-frills wah



**CRY BABY® CLASSIC  
WITH FASEL INSIDE**

**Art. N°: GCB-95F**  
**RRP CHF 153.00**

- Vintage wah tones interpreted through the circuitry of the GCB95
- Sweet midrange and subtle response
- True bypass



**HIGH GAIN™  
VOLUME PEDAL**

**Art. N°: GCB-80**  
**RRP CHF 141.00**

- Heavy-duty construction
- Ultra-sensitive 1-million cycle pot
- Exercise delicate control over wide volume swells



**CUSTOM BADASS  
CRY BABY**

**Art. N°: GCB65**  
**RRP CHF 259.00**

- Combines two iconic wah sounds in a single pedal
- Halo Inductor provides throaty midrange and expressive sweep, while red Fasel Inductor provides bright clarity and lush harmonics
- Toggle between the two with side kickswitch
- Convenient LEDs indicate inductor choice and on/off status
- Fine-tune knobs adjust toe-down frequency from bright to dark
- **LIMITED EDITION**



**CRY BABY® MINI  
535Q WAH**

**Art. N°: CBM535Q**  
**RRP CHF 200.00**

- The perfect balance of wah control and pedalboard efficiency
- Four different frequency sweep ranges to set your own tonal character
- Adjustable, switchable boost allows you to step out in front of the mix
- Q control shapes effect response from sharp to smooth
- Equipped with the legendary red Fasel Inductor



**CRY BABY® MINI  
535Q AUTO RETURN  
WAH**

**Art. N°: CBM535AR**  
**RRP CHF 212.00**

- The perfect balance of wah control, pedalboard efficiency, and onstage convenience
- Auto-return switching for fast and easy engagement of effect
- Four different frequency sweep ranges to set your own tonal character and an adjustable, switchable boost for stepping out in front of the mix
- Q control shapes wah response from narrow to wide
- Equipped with the legendary red Fasel Inductor



**CRY BABY® MULTI  
WAH BLACK**

**Art. N°: 535Q**  
**RRP CHF 200.00**

- Provides control over the most important wah parameters
- Six selectable frequency ranges from bright & aggressive to dark & subtle
- Q control shapes effect response from sharp to smooth
- Switchable boost adjustable up to +16dB
- True bypass





### CRY BABY® MULTI WAH CHROME

Art. N°: 535Q-Chrome  
RRP CHF 270.00

- Provides control over the most important wah parameters
- Six selectable frequency ranges from bright & aggressive to dark & subtle
- Q control shapes effect response from sharp to smooth
- Switchable boost adjustable up to +16dB
- True bypass



### CRY BABY® WAH CONTROL & VOLUME BOOST

Art. N°: 95Q  
RRP CHF 176.00

- Provides extra control over the modern, aggressive sound of the GCB95
- Adjustable boost up to +16dB
- Q control shapes effect response from sharp to smooth
- Convenient auto-return switching so you can step in and out of the effect



### CRY BABY® RACK FOOT CONTROLLER FOR RACK

Art. N°: DCR-1FC  
RRP CHF 179.00

- The companion pedal to the DCR-2SR Crybaby Rack Module
- Dial in your custom Cry Baby Wah settings on the rack module and use the foot controller while you play
- Rocker position controls the wah effect

**Also Available:**  
**DCR-1FC-H Auto Return**  
(Custom Shop)



### Q-ZONE FIXED WAH

Art. N°: QZ1  
RRP CHF 176.00

- Get the sound of a fixed wah without the rocker
- The richly resonant secret weapon sound of many a guitar player
- Simple control interface allows for adjustment of boost, bandpass shape, and frequency center
- Dial in your sound and start playing without worrying about accidentally moving a rocker



### CUSTOM SHOP EURO CRY BABY® RACK MODULE

Art. N°: DCR-2SR-EU  
RRP CHF 839.00

- Amazingly flexible wah tones
- Legendary Fasel inductor for incredibly vocal wah tone and sweep
- Rack mounting keeps signal chain in the rack
- Six-position frequency selector and Variable Q control
- Six controller inputs to accommodate multiple pedals on stage volume pedal capabilities
- Six-band EQ for additional tone sculpting and preset volume boost up to +10dB

## cry baby **SIGNATURE SERIES**



### CRY BABY FUZZ WAH DAREDEVIL

Art. N°: DD95FW  
RRP CHF 270.00

- The resulting collaboration, and in true Daredevil fashion, it's straight-forward & downright dirty
- Fuses the expressive voice of a modded Cry Baby with a gnarly custom fuzz circuit.
- Heavy-duty baseball bat switch toggles fuzz on and off.
- Internal pots control pedal output and fuzz intensity-perfect for instant lead tone.
- Vintage crinkle finish base with polished aluminum rocker top and a custom tread.
- Hand-built with thru hole components and true bypass switching.



### DIME® CRY BABY® FROM HELL WAH

Art. N°: DB01B  
RRP CHF 235.00

- Wide sweep range
- 6 different frequency ranges
- Adjustable, switchable boost, Q control shapes wah response from wide to narrow, and Fine-tune control adjusts toe-down frequency
- Back-mounted LEDs indicate wah & boost on/off status
- Extra output for splitting your signal to a separate FX chain
- Skateboard skid-tape tread lets you keep rocking even if a beverage spills on your pedal





**GARY CLARK JR  
SIGN. CRY BABY®**

**Art. N°: GCJ95  
RRP CHF 200.00**

- Low frequency center provides smooth, warm sound.
- Tight sweep range is perfect for percussive, syncopated rhythms
- Classy brushed patina copper housing



**JOHN PETRUCCI  
SIGN. CRY BABY®**

**Art. N°: JP95  
RRP CHF 235.00**

- Based on John Petrucci's Cry Baby Rack Wah settings
- Ultimate tonal control of wah effect
- Features Volume, Q, and six EQ controls inside the pedal
- Smoked chrome finish and JP shield logo tread



**BUDDY GUY SIGN.  
CRY BABY®**

**Art. N°: BG-95  
RRP CHF 235.00**

- Red Fasel Inductor for a sweet, singing top end
- Two switchable voices: big, throaty growl or warm, bell-like tone
- LEDs indicate voice selection and bypass status.



**JOE BONAMASSA  
SIGN. CRY BABY®**

**Art. N°: JB-95  
RRP CHF 235.00**

- Equipped with improved Halo Inductor design for authentic vintage voice
- Wide, vocal sweep range
- Output buffer prevents impedance imbalance
- Switchable true bypass/buffered bypass operation
- Aluminum housing with copper rocker



**KIRK HAMMETT  
SIGN. CRY BABY®**

**Art. N°: KH-95  
RRP CHF 235.00**

- Based on Kirk's Cry Baby Rack Wah settings
- Pronounced midrange wail
- Exceptionally even response from heel to toe
- True bypass



**KIRK HAMMETT  
SIGN. CRY BABY® V2**

**Art. N°: KH95X  
RRP CHF 259.00**

- Based on Kirk's own Cry Baby Rack Wah settings.
- Capture the same sound he used to revolutionize metal solos.
- Thick top end with a full dynamic range.
- Special edition purple sparkle finish.



**JUSTIN  
CHANCELLOR SIGN.  
CRY BABY®**

**Art. N°: JCT95  
RRP CHF 352.00**

- Combines 3 of Justin Chancellor's epic effects into a single pedal
- U.K. Filter, inspired by his bass' tone circuit, sounds thick and voice-like
- Modified Cry Baby Wah sounds lush and aggressive
- Vintage U.K.-style fuzz that can be paired with either mode or operated independently
- Customize the two rocker modes with Volume and Q controls
- Customize intensity, level, and EQ of fuzz mode
- Includes Pedal Topper to allow for simultaneous engagement of rocker and fuzz modes



**LEO NOCENTELLI  
SIGN. CRY BABY®**

**Art. N°: LN95  
RRP CHF 235.00**

- Pays tribute to a master of funk, the magical city he was born and raised in, and the greasiest effect ever conceptualized
- Dressed in deep purple, flashy gold, and cash-money green with a custom fleur-de-lis tread.
- With a lowered frequency range, it serves up the warm vocalic wah tones that Leo has conjured up his entire career.



**EDDIE VAN HALEN  
SIGN. CRY BABY®**

**Art. N°: EVH-95  
RRP CHF 235.00**

- Based Eddie's customized '90s wah
- Wide sweep with aggressive midrange
- Van Halen II black-and-yellow striped graphics
- Two on/off status LEDs
- True bypass



**JERRY CANTRELL  
SIGN. CRY BABY®  
DISTRESSED BLACK**

**Art. N°: JC95B  
RRP CHF 235.00**

- Dark and moody tone with a wide response
- Retains low-end punch
- Fine-Tune knob adjusts range of toe-down position from bright to dark
- Distressed black finish
- Custom tribal orca treadle
- **LIMITED to 4pcs. in Switzerland**



**JIMI HENDRIX™  
SIGN. CRY BABY®**

**Art. N°: JH-1D  
RRP CHF 200.00**

- Recreates the legendary wah sound from classic Jimi Hendrix tracks
- Throaty & expressive voice
- Lightweight aluminum housing



**JIMI HENDRIX™ CRY  
BABY® MINI WAH**

**Art. N°: JHM9  
RRP CHF 155.00**

- Hendrix's huge sound in a mini housing
- Chrome top rocker with black gator base
- True bypass switching



**TOM MORELLO  
SIGN. CRY BABY®**

**Art. N°: TBM95  
RRP CHF 153.00**

Aggressive, modern sound of the GCB95—the exact pedal Tom has used on every album and every tour throughout his career—with a custom finish bearing quotations chosen by Tom himself to highlight the battle for justice that he's dedicated his craft and career to.



**CLYDE MCCOY®  
SIGN. CRY BABY®**

**Art. N°: CM95  
RRP CHF 235.00**

- Faithfully represents the tone and spirit of the very first wah pedal
- Proprietary Halo™ inductor reproduces the original's famous vocal sound while minimizing microphonic noise thanks to its stabilized cup core
- Thru-hole components built into a classic housing with premium hardware



**SLASH SIGN. CRY  
BABY® CLASSIC**

**Art. N°: SC95  
RRP CHF 212.00**

- Wide, dynamic sweep range
- Warm, throaty sound
- Two on/off status LEDs
- True bypass



**SLASH SIGN. CRY  
BABY®**

**Art. N°: SW-95  
RRP CHF 235.00**

- Classic wah tone with switchable high-gain distortion
- Gain and Volume controls to dial in each effect
- LEDs indicate wah and distortion on/off status
- Topside battery access
- True bypass



## MXR CUSTOM AUDIO ELECTRONICS



### BOOST/LINE DRIVER

Art. N°: MC-401  
RRP CHF 141.00

- The problem solver for a variety of mismatched line level & signal conditioning problems that can occur when combining effects
- Boost function with knob adjustment from 0 to +20dB of clean uncolored boost
- True bypass



### BOOST/OVERDRIVE

Art. N°: MC-402  
RRP CHF 200.00

- Offers the combination of a simple dynamic overdrive and an independent clean boost circuit.
- The overdrive section is truly "classic," adding warmth, sustain, and punch without coloring your sound. The boost circuit alone is a bonus.



### CAE WAH (WITH TRUE BYPASS)

Art. N°: MC-404  
RRP CHF 223.00

- Two switchable inductors for a warm, vintage vibe or bright transparency
- Built-in MXR Boost/Line Driver circuit provides adjustable, switchable boost
- Internal Q controls shape the effect response for each inductor
- True bypass



### CAE BUFFER

Art. N°: MC-406  
RRP CHF 118.00

- Low-noise buffer in a small, rugged steel housing
- Hi and Lo cut options with indication LEDs
- Adjustable 0 to +6dB gain slider
- Features a pass-through 9-volt jack for other effects

## MXR CLASSICS



### PRIME DISTORTION

Art. N°: M69  
RRP CHF 83.00

- Vintage hard clipping
- Highly responsive to attack
- 100% analog



### SUPER BADASS DISTORTION

Art. N°: M75  
RRP CHF 153.00

- Full spectrum of distortion
- From gritty early '70s overdrive to scooped modern crunch
- Active EQ section for accurate, highly controlled tonal shaping
- 100% analog circuitry
- True bypass switching



### CUSTOM BADASS '78 DISTORTION

Art. N°: M78  
RRP CHF 141.00

- A hot-rodded classic circuit
- Roars with huge amp stack tones and old school distortion
- Delivers soaring leads and rich, saturated rhythms
- CRUNCH button boosts harmonic content of distortion



### BLUE BOX™ OCTAVE FUZZ DISTORTION

Art. N°: M103  
RRP CHF 118.00

- Huge subterranean tones
- Fuzzes up your guitar signal, then duplicates it two octaves down
- Blend control sets mix of wet and dry signals
- Used by Jimmy Page for the solo in Led Zeppelin's "Fool in the Rain"



### DISTORTION +

**Art. N°: M104**  
**RRP CHF 118.00**

- Germanium-powered, soft-clipped distortion
- Go from warm, tubey overdrive to gnarly fuzz
- Classic early '80s hard rock tone



### DISTORTION III

**Art. N°: M115**  
**RRP CHF 118.00**

- Dynamic, touch-sensitive response
- Proprietary circuit design delivers rich harmonics
- Large output range
- True bypass



### FULLBORE® METAL DISTORTION

**Art. N°: M116**  
**RRP CHF 141.00**

- Super high-gain distortion
- 3-band EQ with midrange sweep
- SCOOP switch boosts highs and lows
- Switchable Noise Gate with sensitivity control



### CLASSIC 108 FUZZ DISTORTION

**Art. N°: M173**  
**RRP CHF 200.00**

- BC108 Fuzz Face® Distortion circuitry in a pedal-board friendly chassis
- Original Fuzz Face hammer-tone turquoise finish
- True bypass



### SUB MACHINE FUZZ DISTORTION

**Art. N°: M225**  
**RRP CHF 223.00**

- Combines La Machine Fuzz with old school Sub-Octave signal
- Separate volume levels for Fuzz and Sub-Octave signals
- Toggle between Series/Parallel modes
- Octave switch kicks Fuzz signal into Octave Up mode



### SUPER BADASS VARIAC FUZZ DISTORTION

**Art. N°: M236**  
**RRP CHF 176.00**

- Tuned up rare vintage silicon fuzz circuit
- Variac control sets effect voltage from 5V-15V
- Lowering the voltage gives you saggy "dying battery" effect
- Increasing the voltage raises the effect's headroom provides a more transparent, wide open sound
- True bypass



### OCTAVIO FUZZ DISTORTION

**Art. N°: M267**  
**RRP CHF 176.00**

- The classic effect made famous by Jimi Hendrix now comes in a pedalboard-friendly MXR housing
- Simple 2-control interface coaxes out legendary searing, synth-like tones
- Convenient on/bypass LED & AC power jack for modern players



### CLASSIC 108 FUZZ MINI DISTORTION

**Art. N°: M296**  
**RRP CHF 141.00**

- Same vintage tones in an MXR mini housing
- No-nonsense two-knob interface
- Buffer switch makes fuzz play nice with wah pedals
- True bypass
- Includes ECB003 9V Adapter



### POLY BLUE OCTAVE DISTORTION

**Art. N°: M306G1**  
**RRP CHF 259.00**

- Brings modern and classic pitch shifting styles together with fuzz and modulation to create the ultimate octave pedal for tonecrafters and sonic seekers
- Features four separate octave divisions
- The Mono switch takes you back to the gritty, monophonic tones of analog style pitch shifters
- Comes equipped with an unruly fuzz that's inspired by the classic MXR Blue Box™ Fuzz



### CUSTOM BADASS MODIFIED O.D. OVERDRIVE

**Art. N°: M77**  
**RRP CHF 141.00**

- Classic overdrive circuit hot-rodded for added versatility
- Adds sustain and gain without coloring your guitar's tone
- 100Hz knob allows a more focused EQ when cut or a beefier tone when boosted
- BUMP switch engages an alternate EQ voicing that boosts lows and mids
- True bypass



### FAT SUGAR DRIVE

**Art. N°: M94SE**  
**RRP CHF 159.00**

- Brings the Sugar Drive's diverse range of clear and transparent overdrive tones to MXR's classic housing for players who prefer its footprint over that of the mini.
- Unique Drive control—which replicates an amp's transition from clean to dirty by blending your clean signal at the start of the sweep.



### GT-OD OVERDRIVE

**Art. N°: M193**  
**RRP CHF 141.00**

- Traditionally warm & transparent overdrive
- Single tone control makes tone-shaping simple
- Adds sustain and gain without coloring your guitar or amp's tone



### SUPER BADASS DYNAMIC O.D. OVERDRIVE

**Art. N°: M249**  
**RRP CHF 153.00**

- Add extra bite to any rig while preserving your tonal dynamics.
- MOSFET clipping diodes for smooth, purring overdrive.
- Shift gears from a nice, clean boost to vintage high-grain grind.
- Boost/Cut switch bumps the whole signal with a little extra mid-range or drops everything down a notch.
- The perfect pedal for taking your warmed up tube amp over the finish line.



### FOD DRIVE OVERDRIVE

**Art. N°: M251**  
**RRP CHF 200.00**

- Two highly coveted amp stacks recreated in MXR pedal form
- High Gain channel provides super high gain saturation, Crunch Gain provides punchy midrange crunch
- Separate controls for each channel—blend them to create your own harmonic palette
- Scoop switch selects flat, scooped, or boosted midrange voice
- Recreate the experience of playing through two amp stacks at once



### SUGAR DRIVE MINI OVERDRIVE

**Art. N°: M294**  
**RRP CHF 153.00**

- Enhances the natural voice of your rig
- Clear, transparent performance and a diverse range of uses, from boosting to overdrive
- Blends in clean signal to maintain your guitar's character
- Buffer switch toggles between true & buffered bypass switching
- Increased headroom for dynamic, wide open sound
- Includes ECB003 9V Adapter



### UNI-VIBE® CHORUS/ VIBRATO MODULATION

**Art. N°: M68**  
**RRP CHF 176.00**

- Legendary effect in a smaller housing
- Chorus mode sounds rich, lush
- Vibrato delivers a deep, shimmering texture
- True bypass switching





**PHASE 90**  
**MODULATION**

**Art. N°: M101**  
**RRP CHF 118.00**

- The standard by which all other phasers are judged
- Take it from subtle, spatial shimmer to all-out high-velocity swooshing
- Enhances the tonal palette of any instrument—including the human voice
- True bypass



**PHASE 100**  
**MODULATION**

**Art. N°: M107**  
**RRP CHF 176.00**

- Big brother of the Phase 90 with a broader range of sounds
- 4-position rotary switch selects four preset waveforms
- Spacey, psychedelic ambience for guitar solos or chords



**FLANGER**  
**MODULATION**

**Art. N°: M117R**  
**RRP CHF 223.00**

- A staple of funky '70s sounds, from jet plane to space effects
- Numerous tweakable parameters
- Does the work of a flanger, chorus, delay and more



**STEREO CHORUS**  
**MODULATION**

**Art. N°: M134**  
**RRP CHF 223.00**

- Rich analog chorusing
- Bass and Treble controls for shaping chorus tone
- Bass Filter switch for increased low end clarity
- Analog bucket-brigade technology



**ANALOG MICRO CHORUS**  
**MODULATION**

**Art. N°: M148**  
**RRP CHF 141.00**

- Adds rich chorus textures, from sparkly watery shimmers to intense rotating speaker simulation
- All analog circuitry with bucket brigade technology for warm analog tone
- Joins the ranks of MXR Classics such as the Phase 90, Dyna Comp and Micro Amp
- True bypass with LED



**ANALOG MICRO FLANGER**  
**MODULATION**

**Art. N°: M152**  
**RRP CHF 141.00**

- Originally released in the '80s, this faithful recreation features the same critical controls—a Rate knob to control the speed of cycling and a Regen knob to manage the overall intensity—staying true to its 100% analog bucket brigade technology for the ultimate in warm and organic tone.
- The Micro Flanger has been updated with a true bypass switch. Go from jet plane sweeps to cool outer space effects.
- Power: Dunlop ECB-03E AC Adapter or single 9 volt battery



**CARBON COPY®**  
**ANALOG DELAY**  
**MODULATION**

**Art. N°: M169**  
**RRP CHF 176.00**

- The world's bestselling analog delay pedal
- Authentic analog bucket brigade warmth
- Simple control interface for quick setup
- Up to 600ms of delay time
- Mod section for vintage tape echo wow and flutter



**TALK BOX**  
**MODULATION**

**Art. N°: M222EU**  
**RRP CHF 235.00**

- Self-contained amp and speaker driver - no need for a separate rig.
- Volume, Tone and Gain controls for tone-shaping.
- Pedalboard-friendly size.



### ANALOG CHORUS MODULATION

**Art. N°: M234**  
**RRP CHF 153.00**

- Analog bucket-brigade technology
- Small footprint saves pedalboard space
- HIGH and LOW cut controls for detailed tone sculpting
- Two outputs for a wide and sweeping stereo spread



### DEEP PHASE MINI MODULATION

**Art. N°: M279**  
**RRP CHF 176.00**

- Delivers uniquely expressive vintage phaser tones with the impeccable build quality + tweakability that MXR is famous for.
- Unique vintage voice
- Offers a wide range of phase tones, from subtle liquid shifting to thick, swirling turbulence
- Half the footprint of a standard MXR pedal



### PHASE 95 MINI MODULATION

**Art. N°: M290EU**  
**RRP CHF 130.00**

- Combines MXR's most iconic phase circuits in a single mini housing
- Half the footprint of a standard MXR pedal
- 45/90 switch toggles between Phase 45 and Phase 90 circuits
- Script removes feedback for a subtler vintage sound
- ECB-03E 9-volt adapter included



### CARBON COPY® DLX ANALOG DELAY MODULATION

**Art. N°: M292**  
**RRP CHF 270.00**

- Same warm analog sound as the original Carbon Copy
- Tap Tempo function synchronizes delay time to song tempo.
- Adjustable modulation adds liquid texture to repeats, while Bright switch adds brightness and clarity
- Expression jack allows for external control of various functions.
- Internal controls for Guitar/Line level input and Dry Kill switch for "wet only" effect—perfect for studio recording



### CARBON COPY® MINI ANALOG DELAY MODULATION

**Art. N°: M299**  
**RRP CHF 200.00**

- Get the Carbon Copy Delay's analog warmth and ease of use in an MXR mini housing
- Bright switch increases tonal versatility, adding sparkle and clarity to repeats
- Switchable mod section goes from tape echo warble to shimmering chorusing
- Perfect for freeing up space or putting a travel board together
- Includes ECB003 9V adapter



### REVERB MODULATION

**Art. N°: M300-EU**  
**RRP CHF 259.00**

- Six meticulously crafted reverbs in one pedal
- Audiophile quality analog and digital audio paths—dry path is 100% analog
- Studio-grade low noise floor
- Trails Bypass mode lets effect ring out after turning the pedal off
- Expression pedal jack for foot control of all knob settings
- Stereo In/Out capability when using TRS cables (not included)



### TREMOLO MODULATION

**Art. N°: M305G1**  
**RRP CHF 200.00**

- Get all of the most beloved tremolo sounds in a single pedal
- Six masterfully tuned styles: MXR, Bias, Reverse Optic, Optic, Square Wave, & Harmonic
- Speed, Gain, Depth controls for easy out-of-the-box operation
- Advanced features include stereo, tap tempo, expression, & envelope tremolo modes
- Put a wide variety of tremolo sounds on your board without overcrowding it



### MICRO AMP Boost

**Art. N°: M133**  
**RRP CHF 118.00**

- Up to +26dB of gain
- Perfect for switching between guitars with unmatched output
- Great for use with long signal chains or anytime signal drop-off is a problem



**MICRO AMP PLUS**  
Boost

**Art. N°: M233**  
RRP CHF 165.00

- Up to +26dB clean boost
- Specially-tuned Bass and Treble controls for fine tonal shaping
- Low-noise circuitry
- True bypass switching
- Sounds great on bass as well as guitar



**BOOSTER MINI**  
Boost

**Art. N°: M293**  
RRP CHF 141.00

- Get the Echoplex Preamp's saucy mojo with the Micro Amp's boosting power
- Pedalboard-friendly lightweight housing
- Volume control boosts signal up to +25dB
- Internal Echoplex Preamp level control adds a little extra grit to your signal



**10 BAND GRAPHIC**  
EQUALIZER

**Art. N°: M108SEU**  
RRP CHF 176.00

- Cut or boost 10 different frequencies up to  $\pm 12$ dB
- LEDs provide high visibility, even in direct sunlight
- 18-volt operation for increased headroom
- 2 outputs for running 2 separate signal chains
- Low noise floor
- True bypass switching



**6 BAND GRAPHIC**  
EQUALIZER

**Art. N°: M109S**  
RRP CHF 141.00

- Cut or boost six different frequencies up to  $\pm 18$ dB
- LEDs provide high visibility, even in direct sunlight
- Low noise floor
- True bypass switching



**SMART GATE**

**Art. N°: M135**  
RRP CHF 176.00

- Three selectable noise reduction ranges
- Reacts gradually to long, sustained notes and quickly to short, syncopated notes
- Fast attack time preserves picking transients and harmonic overtones



**SMART GATE PRO**

**Art. N°: M235**  
RRP CHF 587.00

- Precise, intelligent noise reduction
- Three selectable ranges per channel for any type of sound source
- Two discrete channels that can be linked to quiet a stereo signal
- True hardwire-bypass outputs on each channel
- Remote switching capabilities



**NOISE CLAMP**  
GATE

**Art. N°: M195**  
RRP CHF 141.00

- Eliminates hiss and excess noise from your effects chain
- A single Trigger knob sets the volume threshold
- Capable of reducing noise up to +26 dB
- Maintains riff definition at extreme gain levels





### STUDIO COMPRESSOR

**Art. N°: M76**  
**RRP CHF 235.00**

- Classic studio compressor in a Phase 90-sized pedal
- CHT™ Constant Headroom Technology for clear, clean performance
- Ten Gain-reduction status LEDs
- True bypass



### DYNA COMP COMPRESSOR

**Art. N°: M102**  
**RRP CHF 118.00**

- In-line compressor “evens out” the signal to your amplifier
- Useful for increased sustain with stable dynamics
- Nashville studio standard



### SUPER COMP COMPRESSOR

**Art. N°: M132**  
**RRP CHF 141.00**

- Classic Dyna Comp® style compression
- Attack Level control preserves attack volume without sacrificing sustain
- Compatible with the hottest pickups



### DYNA COMP DELUXE COMPRESSOR

**Art. N°: M228**  
**RRP CHF 165.00**

- Classic CA3080 “metal can” integrated circuit provides quieter operation, greater transparency, and increased dynamic range
- Clean control blends unaffected signal with compressed signal for optimal balance
- Tone control allows for further refinement of the compressed signal
- Attack switch toggles between slow and fast attack times



### DYNA COMP MINI COMPRESSOR

**Art. N°: M291**  
**RRP CHF 130.00**

- Classic MXR compression in a space-saving mini housing
- Features rare CA3080 “metal can” IC for quieter operation, greater transparency, and increased dynamic range
- All-new Attack switch toggles between slow and fast attack times



### CLONE LOOPER

**Art. N°: M303G1**  
**RRP CHF 176.00**

- Incredible sound quality
- Just plug in, power up, and start recording an unlimited number of layers—up to 6 minutes long—that will be stored even when the pedal is off.
- Changing up the speed of your loop—to double-speed (3 minutes of recording time) or half-speed (12 minutes)—to reversing it entirely
- Provides further external control options when you connect a DVP volume pedal to adjust the loop’s output level or an Tap Tempo Switch to engage Play Loop Once mode



### A/B BOX UTILITY

**Art. N°: M196**  
**RRP CHF 94.00**

- Routes instrument signal to two separate output paths
- Select between two separate signal paths or run both at the same time
- Thru jack allows you to connect to a tuner or amp that receives a constant signal from your guitar, unaffected by the A/B switches
- Output jacks are terminated to ground in bypass
- True bypass switching



### TAP TEMPO UTILITY

**Art. N°: M199**  
**RRP CHF 47.00**

- Adjustable tip/ring configuration
- Ruggedly built, road-ready construction
- Can be used with a variety of pedal types



### DC BRICK™ POWER SUPPLY UTILITY

**Art. N°: M237**  
**RRP CHF 118.00**

- Powers eight 9V pedals and two 18V pedals all at once without sacrificing signal integrity
- Features eight red LEDs to clearly indicate short-circuited pedals
- Includes AC adapter + all necessary cables to connect pedals to the unit



### ISO-BRICK POWER SUPPLY UTILITY

**Art. N°: M238**  
**RRP CHF 200.00**

- Pedalboard-friendly size
- 10 fully-isolated outputs
- Quiet, noise-free operation
- Powers a wide range of pedal types—digital and analog, positive and negative ground
- (2) 9V outputs @ 100mA, (2) 9V @ 300mA, (2) 9V @ 450mA, (2) 18V @ 250mA, and (2) variable outputs adjustable from 6V to 15V @ 250mA
- On/off + connection status LEDs



### MINI ISO-BRICK™ POWER SUPPLY UTILITY

**Art. N°: M239**  
**RRP CHF 118.00**

- 5 outputs, and each is fully isolated to eliminate obnoxious, gig-ending ground loop noise.
- 4 of the outputs supply 9 volts of power at 300mA, while a fifth can be set to provide either 9 volts or 18 volts at 800mA depending on your needs.



### HYBRID FUZZ DISTORTION

**Art. N°: CSP041**  
**RRP CHF 200.00**

- Combines snarling high-gain silicon and the shaggy warmth of germanium
- Broad range of tones with a simple two-knob interface
- Go from searing psychedelica to high-desert grindage
- Highly responsive to your guitar's volume control
- Draped in a super tripped out finish courtesy of design studio One Horse Town



### TIMMY OVERDRIVE

**Art. N°: CSP027**  
**RRP CHF 176.00**

- Designed with veteran Nashville pedal builder Paul Cochrane
- Provides a huge range of overdrive tones in a mini housing
- Choose from 3 different clipping styles to cover a multitude of situations
- Dial in a big, bold sound that's always on, a super saturated sound for fat chords, and more



### RAIJIN DRIVE OVERDRIVE

**Art. N°: CSP037**  
**RRP CHF 176.00**

- 2nd collab. between Shin Suzuki and the MXR Custom Shop.
- Reinvents iconic Japanese overdrive and distortion with greater tonal range and usability.
- Switch between the two signals with the flip of a switch.
- Each is designed to complement the voice of your instrument.
- Straightforward yet highly responsive control setup for quickly dialing in great sounds.



### DUKE OF TONE OVERDRIVE

**Art. N°: CSP039**  
**RRP CHF 179.00**

- Collab. MXR & Analog Man.
- Adds warmth & grit while allowing the sound and feel of your high-end gear to shine.
- Thru-hole components personally tested by Analog Mike.
- Boost/OD/Disto. switch allows you to set the overall attitude of the pedal's output.
- Stack it with other gain pedals for creatively crunchy results.
- Allows all of your signal chain's nuances to come through, from strings to amp tubes.



### MXR X THIRD MAN HARDWARE DOUBLE DOWN

**Art. N°: CSP042**  
**RRP CHF 200.00**

- 2 Micro Amps in a single pedal.
- Splits your signal to 2 separate outputs, each with its own Gain control for up to +26dB of signal-boosting Phase switch adds a renowned stereophonic effect by inverting the phase of the second output signal.
- Buffer switch to choose between true bypass and buffered bypass switching.
- Double boost your double stack



### '74 VINTAGE PHASE 90 MODULATION

**Art. N°: CSP026**  
**RRP CHF 176.00**

- Hand-wired circuit board built with original-spec 1974 components
- Original high-quality Switchcraft Input/Output jacks and Carling bypass switch
- Hand-selected FETs, matched to produce deep and rich phasing
- All analog circuitry for warm analog tone



### SCRIPT PHASE 90 WITH LED MODULATION

**Art. N°: CSP101SL**  
**RRP CHF 153.00**

- Defined the classic phase shifter sound, and was heard on everything from hard rock to jazz-fusion to funk hits
- Headroom and clarity of the original, ultra-warm and smooth phasing and reduced midrange swell
- Power: Dunlop ECB-03E AC adapter or single 9 volt battery.



### SCRIPT DYNA COMP® WITH LED COMPRESSOR

**Art. N°: CSP102SL**  
**RRP CHF 176.00**

- Combines old school sound with modern conveniences
- Spec'd from 1976 unit
- Features rare CA3080 "metal can" IC for quieter operation, greater transparency, and increased dynamic range
- Updated with bypass status LED and AC power jack

## **MXR** SIGNATURE SERIES



### DIME DISTORTION

**Art. N°: DD-11**  
**RRP CHF 180.00**

- Aggressive, tight and focused distortion
- 3-band EQ
- Scoop switch to cut mids



### DOOKIE™ DRIVE III OVERDRIVE

**Art. N°: DD25V3**  
**RRP CHF 223.00**

- Get the dirty, punchy overdrive sound that Billie Joe Armstrong used on Green Day's Dookie
- Captures the tones of both of Billie Joe's custom amplifiers in a single pedal
- High Gain section supplies tons of scooped gain - Crunch Gain section serves up a well-defined midrange
- Blend the 2 sounds together just like Green Day did in the studio
- Limited edition artwork celebrates the "The Father of All..." record



### DOOKIE™ DRIVE IV OVERDRIVE

**Art. N°: DD25V4**  
**RRP CHF 233.00**

- Get the dirty, punchy overdrive sound that Billie Joe Armstrong used on Green Day's Dookie
- Captures the tones of both of Billie Joe's custom amplifiers in a single pedal
- High Gain section supplies tons of scooped gain - Crunch Gain section serves up a well-defined midrange
- Blend the 2 sounds together just like Green Day did in the studio
- Limited edition artwork celebrates the "The Father of All..." record



### RAW DAWG ERIC GALES SIGNATURE OVERDRIVE

**Art. N°: EG74**  
**RRP CHF 141.00**

- This pedal is based on a classic OD famous for its grit and crunch-but we balanced out the midrange and bumped up the gain for a sweeter, more natural sound even when cranked
- Classic circuit customized for balanced midrange and higher gain
- Simple three-knob interface
- Mini housing for ultimate pedal-board convenience





**EDDIE VAN HALEN  
5150 CHORUS  
MODULATION**

**Art. N°: EVH-30  
RRP CHF 235.00**

- Captures Eddie's early '80s chorus sound
- Input & Output Level switches to optimize signal-to-noise performance + achieve unity throughput gain
- Volume, Tone, & Intensity controls
- Internal True/Buffered Bypass switch
- Mono and Stereo outputs
- **Limited to 15pcs. in Switzerland**



**PHASE 90 EDDIE  
VAN HALEN  
MODULATION**

**Art. N°: EVH-90  
RRP CHF 164.00**

- Deep, rich phasing
- Script switch toggles between old school and modern phase sounds
- Custom EVH paint job



**FLANGER EDDIE  
VAN HALEN  
MODULATION**

**Art. N°: EVH-117  
RRP CHF 235.00**

- Four different parameters for precise fine-tuning
- EVH switch engages "Un-chained" flanger tone
- Custom EVH paint job



**OVERDRIVE EDDIE  
VAN HALEN**

**Art. N°: EVH-5150  
RRP CHF 235.00**

- Designed in close collaboration with Eddie Van Halen
- Delivers a full range of powerful saturation via multi-stage MOS-FETs
- Features 3-band EQ section for versatile tweakability and a Boost switch to add extra gain and compression
- Gate control tames unwanted noise
- Sounds great through a wide variety of amps and speaker cabs

### AUTHENTIC HENDRIX



**'68 SHRINE, FUZZ  
FACE DISTORTION**

**Art. N°: JHMS1  
RRP CHF 176.00**

- This special edition of the Fuzz Face Distortion pays tribute to the legendary Jimi Hendrix with a custom finish that remixes prolific and celebrated rock artist John Van Hamserveld's famous 1968 Shrine Auditorium concert poster art.
- Licks of green and blue flame evoke the fiery passion and metaphysical musical experience that Jimi Hendrix gave to the world while psychedelic lettering captures the vibe of the era.



**'68 SHRINE  
OCTAVIO FUZZ**

**Art. N°: JHMS2  
RRP CHF 176.00**

- This special edition of the Octavio Fuzz pays tribute to the legendary Jimi Hendrix with a custom finish that remixes prolific and celebrated rock artist John Van Hamserveld's famous 1968 Shrine Auditorium concert poster art.
- Wings soar above a psychedelic landscape, evoking the musical journey that Jimi Hendrix's work takes us on-from solid ground to high in the sky.



**'68 SHRINE UNI-  
VIBE CHORUS/  
VIBRATO**

**Art. N°: JHMS3  
RRP CHF 176.00**

- This special edition of the Uni-Vibe Chorus/Vibrato pays tribute to the legendary Jimi Hendrix with a custom finish that remixes prolific and celebrated rock artist John Van Hamserveld's famous 1968 Shrine Auditorium concert poster art.
- Star-spangled embellishments & psychedelic lettering highlight the explosive contribution of Jimi Hendrix and the mind-bending mojo of that historical moment.



**'68 SHRINE BAND  
OF GYPSYS FUZZ**

**Art. N°: JHMS4  
RRP CHF 176.00**

- This special edition of the Band of Gypsies Fuzz pays tribute to the legendary Jimi Hendrix with a custom finish that remixes prolific and celebrated rock artist John Van Hamserveld's famous 1968 Shrine Auditorium concert poster art
- A buzzsaw starburst, peaceful sunflowers, and psychedelic lettering awash in warm, vibrant colors highlight the magic of contrasting forces.



### SLASH OCTAVE FUZZ

**Art. N°: SF01**  
**RRP CHF 200.00**

- Three different effects to thicken up your tone
- Sub-octave growl
- Thick '70s shag fuzz
- Psychedelic Octave Up fuzz



### TOM MORELLO POWER 50 OVERDRIVE

**Art. N°: TBM1**  
**RRP CHF 235.00**

- Captures the sound + functionality of Tom's setup for use with any rig, whether you have a simple combo amp or a high-end custom stack
- Authentic amp tones recreated from the ground up
- A full range of controls taken right from the amp
- Its own FX loop taps into the raw signal-clipping point prior to the Presence control and the custom tone-shaping at the output



### WYLDE AUDIO OVERDRIVE

**Art. N°: WA44**  
**RRP CHF 159.00**

- Custom built for Zakk's loud, tough, & relentless riffs and leads
- This muscular stomp box will transform your amp into a heavy, chunky crunch machine
- With a simple Output, Tone, and Gain control layout, setup is fast and easy so that you can concentrate on the important business at hand—kicking major sonic ass



### WYLDE AUDIO CHORUS

**Art. N°: WA38**  
**RRP CHF 179.00**

- Zakk's secret weapon for thickening up walls of distortion and adding liquid dimension and texture to clean passages
- Rich vintage-style analog tones, which can be dialed in with High and Low cut filters and Level, Rate, and Depth controls
- Hook up two amps via the two outputs for a wide and sweeping stereo spread



### WYLDE AUDIO PHASE

**Art. N°: WA90**  
**RRP CHF 149.00**

- Adds dimension and dynamics to Zakk's legendarily blazing solos and razor sharp leads—all with the twist of a single Rate knob
- Take it from a slow grind to a jack hammering pulse, or use it as Zakk does, at the 9 o'clock position for a slow burning sweep

#### WAY HUGE ELECTRONICS



### SMALLS SWOLLEN PICKLE JUMBO FUZZ MKIII

**Art. N°: WM41**  
**RRP CHF 176.00**

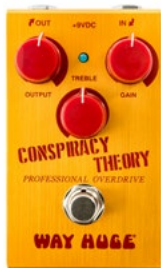
- Super saturated Swollen Pickle Fuzz in a more pedalboard-friendly form than ever
- Toggle midrange scoop or compression intensity with the flip of a switch
- Dial in a potent fuzz sound in no time with a simple three-knob interface



### SMALLS STONE BURNER SUB ATOMIC FUZZ

**Art. N°: WM81**  
**RRP CHF 200.00**

- Will put you in touch with your freaky side
- The fuzz and sub octave signals each have their own level knobs so that you can mix the two to your own twisted taste. The Sub 1/Sub 2 switch lets you choose just how low your dirty deeds can go. Volume and Tone controls round out this pedal's insidious interface.



### SMALLS CONSPIRACY THEORY OVERDRIVE

**Art. N°: WM20**  
**RRP CHF 176.00**

- Based on a mysterious mythical overdrive circuit
- Maintains voice of your instrument
- Blends clean signal with for smooth, transparent tones
- Increased headroom for dynamic, wide open sound
- Simple three-knob interface
- True bypass switching



### SMALLS GREEN RHINO OVERDRIVE

**Art. N°: WM22**  
**RRP CHF 176.00**

- Unleashes a stampede of gnarly, gritty tones that rivals its larger companions'
- With this level of versatility, you can take any amp from pristine to punchy, from dirty to thunderous.
- This pedal will have your amp showing a whole new side of itself.



### SMALLS RED LLAMA OVERDRIVE MKIII

**Art. N°: WM23**  
**RRP CHF 176.00**

- Celebrate the 30th anniversary of Way Huge with its very first pedal-the Red Llama Overdrive.
- Now in the compact Smalls enclosure with all the sensitivity and mojo of the original.
- Delicious harmonic overdrive from soft and cuddly to burly and brutal.
- The iconic Red Llama Overdrive is back-and more compact than ever!



### SMALLS STO "SUPER TERRIFIC OVERDRIVE"

**Art. N°: WM25**  
**RRP CHF 185.00**

- Delivers smooth, silky overdrive that sounds like the purr of a freshly tuned-up muscle car
- It simple three-knob setup offers just about the fastest and easiest ride to overdriven paradise.
- The Drive knob deserves special recognition—its range is wide and responsive and makes it sound like your amp is breaking up of its own natural accord but without any more volume than you need



### SMALLS SUPA-LEAD OVERDRIVE

**Art. N°: WM31**  
**RRP CHF 176.00**

- Dynamic, touch-sensitive overdrive that's super responsive to your guitar's volume control
- Designed to get crunchy tones from a clean or slightly dirty amp
- Produces a focused midrange grind with tons of volume



### SMALLS BLUE HIPPO ANALOG CHORUS

**Art. N°: WM61**  
**RRP CHF 200.00**

- Same lusciously liquefied sounds in a more pedalboard-friendly package
- Take it from lush tone-widening to full-on rotating speaker madness
- Vibe switch adds thick vibrato texture



### SMALLS AQUA-PUSS ANALOG DELAY

**Art. N°: WM71**  
**RRP CHF 200.00**

- Same bright, jangly sound in a more pedalboard-friendly package
- Perfect for tone-thickening and old school slap-back delay
- All-analog signal path
- Simple three-knob interface



### SMALLS ATTACK VECTOR PHASER & ENVELOPE

**Art. N°: WM92**  
**RRP CHF 235.00**

- Combines phase shifter and envelope filter in a compact housing.
- Fifty shades of rude behavior to twist your riffs into crazy new forms.
- Go from funky peaks to gloopy twang.





### SAUCY BOX HIGHLY VERSATILE OVERDRIVE

**Art. N°: WHE205**  
**RRP CHF 153.00**

- This pedal forgoes individual clean and drive controls and automatically balances the optimum ratio of the two with a single Gain control.
- This unique design provides for everything from pure a unity-gain buffer to a clean boost & all the way to a salaciously buttery overdrive.
- To top it all off, this pedal has a passive tone circuit that will play nice with any pickup type.



### OVERDRIVE

**Art. N°: WHE205OD**  
**RRP CHF 153.00**

- The illustrious Saucy Box Overdrive in a shiny new skin.
- Unparalleled versatility from discrete clean and overdrive signal paths.
- Organic sound that's dynamic and finger-friendly.
- Plug-and-play simplicity.
- Passive tone control circuit for creating a smooth, round sound



### GREEN RHINO OVERDRIVE MKIV

**Art. N°: WHE207**  
**RRP CHF 176.00**

- Smaller and more compact with more force than ever
- Volume, Tone, and Drive controls of the original
- 100Hz control from the MkII cuts or boosts lows by 12dB
- All-new 500Hz control cuts or boosts mids by 12dB
- Classic switch reverts to original 3-knob setup for fast access to the classic Green Rhino Overdrive sound



### PURPLE PLATYPUS™ OCTIDRIVE

**Art. N°: WHE800**  
**RRP CHF 185.00**

- Combines the burly, buttery tones and amp-clobbering gain of the Red Llama Overdrive with a frequency doubler that creates an octave-up effect that will take you all the way from eerie ring modulator style effects to downright massive octave fuzz.



### SWOLLEN PICKLE™ JUMBO FUZZ MKIIS

**Art. N°: WHE401S**  
**RRP CHF 176.00**

- Smaller, more pedalboard-friendly housing
- Take your signal from mild crunch to high gain Armageddon
- Scoop, Crunch, and internal Voice and Clip controls for fine-tuning fuzz sound



### ECHO-PUSS ANALOG DELAY

**Art. N°: WHE702S**  
**RRP CHF 193.00**

- Organic analog delay pedal
- Features a simple user interface to fine tune your repeats
- Serves up 600ms of delay time
- Powered by gravel-voiced bucket-brigade chips
- Add liquid textures with a fully tweakable LFO circuit



### SUPA-PUSS™ ANALOG DELAY

**Art. N°: WHE707**  
**RRP CHF 317.00**

- Features bountiful delay time & fine control over your repeats
- Six bucket-brigade chips deliver up to 900 milliseconds of delay time
- Programmable up to 3 full secs. with Tap Tempo switch
- Subdivision control
- Chase mode cycles repeats through each of the subdivision values for maximum freak-out effects
- Tone, Gain, Speed, Depth controls
- Mix control blends wet and dry signals to your taste
- Expression pedal jack



### ATREIDES ANALOG WEIRIDING MODULE

**Art. N°: WHE900**  
**RRP CHF 235.00**

- Inspired by a vintage mini synth pedal
- A single effect with many layers
- Sub, envelope, fuzz, and phase sounds
- Sliders adjust each parameter
- Internal switch sets sub at 1 or 2 octaves down
- Internal pot adjusts phaser feedback
- **LIMITED EDITION**



## EVOLUTION ORANGE UNDERDRIVE

**Art. N°: MP-EOU**  
**RRP CHF 129.00**

Evolution Orange Underdrive (EOU) offers a new way to approach your tone. Instead of overdriving your clean tone, now you can get cleaner tones from your favorite overdriven tone. That is what we call underdriving.

It works by lowering the midrange as that is where the overdrive mostly is. EOU can also be used to boost the midrange by setting the midrange and volume up.



## ROYAL BLUE OVERDRIVE

**Art. N°: MP-RBO**  
**RRP CHF 169.00**

The Royal Blue Overdrive is an extremely touch sensitive overdrive. It offers a really wide range of dirt from clean boost/EQ to distortion. Filtering is limited on the overdrive to provide transparent tone that you can tailor with the Treble and Bass knobs.

It lets you determine the amount of breakup by how hard you strike the strings with your pick, and/or by adjusting the volume knob on your guitar.



## THE GREEN WONDER

**Art. N°: MP-TGW**  
**RRP CHF 189.00**

The Green Wonder is a versatile high headroom overdrive/booster pedal, that has high output and sounds great with both single coil and humbucking pickups. It works extremely well with different kinds of amplifiers and can be used with both clean and overdrive channels, even with heavy distortion. Also ideal also for players seeking a pedal to stack with other pedals!



## SWEET HONEY OVERDRIVE

**Art. N°: MP-SHO**  
**RRP CHF 189.00**

The Green Wonder is a versatile high headroom overdrive/booster pedal, that has high output and sounds great with both single coil and humbucking pickups. It works extremely well with different kinds of amplifiers and can be used with both clean and overdrive channels, even with heavy distortion. Also ideal also for players seeking a pedal to stack with other pedals!



## DEEP BLUE DELAY

**Art. N°: MP-DBD**  
**RRP CHF 189.00**

A natural sounding digital/analog delay, with an analog direct signal path.

It is voiced after a classic tape echo and can be used either in front of an amplifier or in an effects loop. The pedal is specially designed to work well with distorted tones, as this is the most critical application. A ambience delay who gives a tuned response that doesn't need to be on the beat to sound good.



## SNOW WHITE AUTO WAH GB

**Art. N°: MP-SAW**  
**RRP CHF 189.00**

Tuned like a real wah. It has very fast tracking and accuracy rarely found auto wahs/envelope filters. Also the pedal has a unique decay control for the filter frequency fall speed. You can set it to be fast for wah effects on every note or slower for a more traditional wah sound. By experimenting with the four knobs you can find a lot of different tones suitable for your guitar and playing style.



## SILVER SPRING REVERB

**Art. N°: MP-SSR**  
**RRP CHF 189.00**

Big reverb in a small box! Mad Professor has captured the beautiful and sought after sound of a huge and bulky tube tank spring reverb and put it in a small box under the name Silver Spring Reverb. Compact, very easy to use digital/analog-reverb with a pure analog direct signal path. It creates a natural sounding ambient reverb that will not get in the way of your original signal.



## FORREST GREEN COMPRESSOR

**Art. N°: MP-FGC**  
**RRP CHF 189.00**

A high quality compressor pedal for guitar and bass. Extremely low noise throughout the range and also minimum distortion even with the wide dynamic input range. Switchable compressor and sustainer mode. In sustain mode the attack is preserved and this is great when you need a dynamic and touch sensitive tone with a long sustain. Compressor mode is like a standard compression.





**SUPER BLACK**



**SUPREME MATT SCHOFIELD**

**Art. N°: MP-SB**  
**RRP CHF 249.00**

**Art. N°: MP-SMS**  
**RRP CHF 269.00**

The vintage Fender tone in a box! The whole amp signal path is replicated inside. You can turn your amplifier easily into 60's Fender glory! You can plug the Super Black pedal in front of your amp or also into the return jack of your amp's FX loop. This way you can bypass the preamp of your amp and get the sound of a full Blackface amp signal path without the color of your amp's preamp.

The pedal is called Supreme because it simply excels in both tone and functionality. Supreme was born in collaboration with the world famous tone connoisseur Matt Schofield. Matt was looking after the best guitar overdrive tones possible and a specific functionality: two pedals in one, switching from one side to the other with just a single press on the switch.







## ENGINE ROOM POWER SUPPLY LVL5

**Art. N°: 023-0106-005**  
**RRP CHF 135.50**

- 5 ground isolated outputs each capable of 9Vdc @ 500mA
- Global mains input voltage (100-240Vac) 50/60Hz for use anywhere in the world
- Standard IEC mains voltage connector
- Dimensions: Length 85 mm (3.346 in); Width 130 mm (5.118 in); Height 42 mm (1.654 in)
- Cable kit included



## ENGINE ROOM POWER SUPPLY LVL8

**Art. N°: 023-0106-008**  
**RRP CHF 229.50**

- 8 ground isolated outputs – 6 outlets fixed 9Vdc at 500mA and 2 outlets with switchable voltage (9v/12v/18v)
- Global mains input voltage (100-240Vac) 50/60Hz for use anywhere in the world
- Standard IEC mains voltage connector
- Dimensions: Length 214 mm (8.425 in); Width 90 mm (3.543 in); Height 42 mm (1.654 in)
- 5V USB-A and USB-C output for charging smart devices
- Cable kit included



## ENGINE ROOM POWER SUPPLY LVL12

**Art. N°: 023-0106-012**  
**RRP CHF 282.50**

- 12 ground isolated outputs – 10 outlets fixed 9Vdc at 500mA and 2 outlets with switchable voltage (9v/12v/18v)
- Global mains input voltage (100-240Vac) 50/60Hz for use anywhere in the world
- Standard IEC mains voltage connector
- Dimensions: Length 282 mm (11.102 in); Width 90 mm (3.543 in); Height 42 mm (1.654 in)
- 5V USB-A and USB-C output for charging smart devices
- Cable kit included



## PUGILIST DISTORTION

**Art. N°: 023-4534-000**  
**RRP CHF 129.00**

- Dual gain engines
- Discrete tone controls per channel
- LED backlit knobs
- Magnetically latched hinged 9V battery door
- Lightweight durable anodized aluminum construction



## DUEL PUGILIST DISTORTION

**Art. N°: 023-4562-000**  
**RRP CHF 229.50**

- 2 independent distortion circuits
- Series and parallel options
- Master two-band EQ
- True-bypass and all analog
- LED backlit knobs
- Lightweight durable anodized aluminum construction



## FULL MOON DISTORTION

**Art. N°: 023-4537-000**  
**RRP CHF 204.00**

- High-gain distortion effect pedal
- Onboard 3-Band EQ; Texture and Bite switches
- Up to 12dB switchable Boost
- Magnetically latched hinged 9V battery door
- LED-backlit knobs; Fender Amp Jewel LED



## MTG TUBE DISTORTION

**Art. N°: 023-4539-000**  
**RRP CHF 219.00**

- Real tube-driven distortion pedal NOS 6205 preamp tube
- 3-Band EQ; Boost with Gain and Level controls
- LED-backlit knobs; Fender Amp Jewel LED
- Standard 9VDC center-negative power connection



### MTG : LA® TUBE DISTORTION

Art. N°: 023-4547-000  
RRP CHF 219.50

- Tube distortion pedal
- NOS 6205 preamp tube
- 3-Band EQ
- Boost with Gain & Level controls
- Global Tight control



### COMPUGILIST COMPRESSOR/DISTORTION

Art. N°: 023-4551-000  
RRP CHF 189.00

- Compression/distortion pedal
- All-analog design
- Independently switchable
- Bass Boost
- Stage-ready construction



### THE PELT FUZZ

Art. N°: 023-4542-000  
RRP CHF 139.00

- Silicon fuzz effect pedal
- Mid and Thick voicing switches
- LED-backlit knobs; Fender Amp Jewel LED
- Magnetically latched hinged 9V battery door
- Lightweight durable anodized aluminum construction



### THE TRAPPER DUAL FUZZ

Art. N°: 023-4545-000  
RRP CHF 189.00

- Dual fuzz effect pedal
- Two discrete fuzz voices
- Switchable high octave
- Interactive noise gate
- Global Tone and Contour controls



### SANTA ANA OVERDRIVE

Art. N°: 023-4533-000  
RRP CHF 240.50

- FET technology for tube-like performance
- 'A' and 'B' overdrive voicings
- LED backlit knobs
- Fender Amp Jewel LED
- Magnetically latched hinged 9V battery door
- Lightweight durable anodized aluminum construction



### LOST HIGHWAY PHASER

Art. N°: 023-4544-000  
RRP CHF 167.00

- Analog 4- & 8-stage phaser pedal
- Slow/Fast with independent Rate and Depth controls
- Blend and Feedback controls
- Sine and Triangle waveforms
- Dynamically responsive modulation rate



### TREAD-LIGHT WAH PEDAL

Art. N°: 023-4555-000  
RRP CHF 114.50

- Analog Wah Pedal
- Adjustable 3-Way frequency selector
- Switchable under-treadle LED
- Switchable Internal BufferTreadle torque is adjustable for comfort
- Power with 9V battery or center negative AC adapter (not included)



### TREAD-LIGHT VOLUME/EXPRESSION PEDAL

Art. N°: 023-4556-000  
RRP CHF 114.50

- Analog Volume/Expression pedal
- Top mounted jacks
- Switchable under-treadle LED
- Treadle torque is adjustable for comfort
- Expression output requires 1/4" TRS cable
- 9-Volt Battery or Center Negative AC Adapter (not included)



## ENGAGER BOOST

**Art. N°: 023-4536-000**  
**RRP CHF 126.00**

- Clean Boost effect pedal
- Onboard 3-Band EQ; true or buffered bypass
- LED-backlit knobs; Fender Amp Jewel LED
- Magnetically latched hinged 9V battery door
- Lightweight durable anodized aluminum construction



## THE BENDZ COMPRESSOR

**Art. N°: 023-4531-000**  
**RRP CHF 129.00**

- Dual internal audio paths for low noise
- High-current symmetrical control path for fast response time
- LED backlit knobs
- Fender Amp Jewel LED
- Magnetically latched hinged 9V battery door
- Lightweight durable anodized aluminum construction



## LEVEL SET BUFFER

**Art. N°: 023-4530-000**  
**RRP CHF 119.00**

- Level and Hi-Freq trim controls
- Main Mute footswitch for silent tuning
- LED backlit knobs
- Fender Amp Jewel LED
- Magnetically latched hinged 9V battery door
- Lightweight durable anodized aluminum construction



## LAYER REVERB

**Art. N°: 023-4532-000**  
**RRP CHF 189.00**

- Hall, Room and Shimmer reverb types
- Reverb tails continue when effect is muted
- LED backlit knobs
- Fender Amp Jewel LED
- Magnetically latched hinged 9V battery door
- Lightweight durable anodized aluminum construction



## MIRROR IMAGE DELAY

**Art. N°: 023-4535-000**  
**RRP CHF 177.50**

- Digital, Analog and Tape delay types
- Option to add dotted-eighth note
- LED backlit knobs
- Magnetically latched hinged 9V battery door
- Lightweight durable anodized aluminum construction



## BUBBLER ANALOG CHORUS/VIBRATO

**Art. N°: 023-4540-000**  
**RRP CHF 167.00**

- Analog chorus pedal
- Slow/Fast with independent Rate and Depth controls
- Sine and Triangle waveforms
- Dynamically responsive modulation rate
- Stereo outputs



## TRE-VERB DIGITAL REVERB/TREMOLO

**Art. N°: 023-4541-000**  
**RRP CHF 279.00**

- Tremolo and reverb pedal
- Independent Tremolo and Reverb effects with three voices each
- Tap Tempo for Tremolo rate
- Stereo inputs and outputs
- LED-backlit knobs



## THE PINWHEEL ROTARY SPEAKER EMULATOR

**Art. N°: 023-4543-000**  
**RRP CHF 275.00**

- Rotary speaker pedal
- Switchable Slow/Fast speeds
- Onboard overdrive; dynamically responsive modulation rate
- Stereo inputs and outputs
- Selectable guitar and keyboard voicings





## REFLECTING POOL DELAY/REVERB

**Art. N°: 023-4546-000**  
**RRP CHF 335.00**

- Delay/reverb effect pedal
- Time, Variation & Quality Controls
- Dedicated Tap Tempo footswitch
- Stereo inputs and outputs



## ACOUSTIC PREAMP/PREVERB

**Art. N°: 023-4548-000**  
**RRP CHF 204.00**

- Digital Reverb with three unique settings
- High-fidelity Preamp
- Anti-feedback Notch Filter
- Tilt EQ Control
- LED backlit knobs
- Lightweight durable anodized aluminum construction



## POUR OVER ENVELOPE FILTER

**Art. N°: 023-4549-000**  
**RRP CHF 195.00**

- Envelope filter pedal
- Onboard distortion
- High-, Low- & Band-Pass filters
- Sweep direction control
- Magnetically latched hinged 9V battery door
- Amp jewel LED



## MTG TUBE TREMOLO

**Art. N°: 023-4554-000**  
**RRP CHF 209.00**

- Analog Tube Tremolo
- NOS 6205 preamp tube
- Tap tempo
- Powered via 9V adaptor (not included)



## DUAL MARINE LAYER REVERB

**Art. N°: 023-4563-000**  
**RRP CHF 251.00**

- Beautiful Marine Layer reverb sounds
- Two Presets/Channels
- Sustain Footswitch
- Analog dry path
- LED backlit knobs
- Lightweight durable anodized aluminum construction



## HAMMERTONE™ DISTORTION

**Art. N°: 023-4570-000**  
**RRP CHF 99.00**

- Fender®-Designed Analog Distortion Circuit
- 2-Band Active Bass & Treble EQ
- Top Mount Input/Output Jacks
- True-Bypass Switching
- Powered by 9-Volt Battery or Center Negative AC Adaptor, Not Included



## HAMMERTONE™ FUZZ

**Art. N°: 023-4574-000**  
**RRP CHF 99.00**

- Fender®-Designed Fuzz Circuit
- Optional Octave-Fuzz Switch
- Top Mount Input/Output Jacks
- True-Bypass Switching
- Powered by 9-Volt Battery or Center Negative AC Adaptor, Not Included



## HAMMERTONE™ OVERDRIVE

**Art. N°: 023-4571-000**  
**RRP CHF 99.00**

- Unique Fender®-Designed Analog Overdrive Circuit
- Pre-Gain Mid Boost
- Top Mount Input/Output Jacks
- True-Bypass Switching
- Powered by 9-Volt Battery or Center Negative AC Adaptor, Not Included



## HAMMERTONE™ METAL

**Art. N°: 023-4575-000**  
**RRP CHF 99.00**

- Fender®-designed High Gain Distortion Circuit
- 2-Band Active Bass & Treble EQ
- Top Mount Input/Output Jacks
- True-Bypass Switching
- Powered by 9-Volt Battery or Center Negative AC Adaptor, Not Included



## HAMMERTONE™ CHORUS

**Art. N°: 023-4576-000**  
**RRP CHF 129.00**

- Fender®-designed Chorus Effect
- Type & Tone Switches
- Top Mount Input/Output Jacks
- True-Bypass Switching
- Powered by 9-Volt Center Negative AC Adaptor, Not Included



## HAMMERTONE™ DELAY

**Art. N°: 023-4572-000**  
**RRP CHF 129.00**

- Fender®-designed Digital Delay Circuit
- Type & Mod Switches
- Top Mount Input/Output Jacks
- True-Bypass Switching, Analog Dry-Through
- Powered by 9-Volt Center Negative AC Adaptor, Not Included



## HAMMERTONE™ SPACE DELAY

**Art. N°: 023-4577-000**  
**RRP CHF 129.00**

- Fender®-designed Tape Delay Effect
- Pattern & Mod Switches
- Top Mount Input/Output Jacks
- True-Bypass Switching, Analog Dry-Through
- Powered by 9-Volt Center Negative AC Adaptor, Not Included



## HAMMERTONE™ FLANGER

**Art. N°: 023-4578-000**  
**RRP CHF 129.00**

- Fender®-Designed Flanger Effect
- Resonance & Type Switches
- Top Mount Input/Output Jacks
- True-Bypass Switching
- Powered by 9-Volt Center Negative AC Adaptor, Not Included



## HAMMERTONE™ REVERB

**Art. N°: 023-4573-000**  
**RRP CHF 129.00**

- Fender®-designed Reverb Effect
- Type & Tone Switches
- Top Mount Input/Output Jacks
- True-Bypass Switching
- Powered by 9-Volt Center Negative AC Adaptor, Not Included



**DISTORTION PEDAL**



**2 SWITCH ABY  
PEDAL, RED**



**EXP-1 EXPRESSION  
PEDAL, GRAY**

**Art. N°: 023-4501-000**  
**RRP CHF 100.50**

- Rock your amp and your guitar tone with the Fender Distortion Pedal, which delivers enormously satisfying distortion and sustain from subtle boost to scorching full-on crunch.
- Responds ideally to your guitar's volume control and works great with a wide variety of amplifiers.

**Art. N°: 023-4506-000**  
**RRP CHF 52.50**

Fender's ABY footswitch with passive switcher allows you to plug a single guitar into two amplifiers or plug two guitars into a single amplifier, making it easy and convenient to create a rig with eminent flexibility and a variety of tone options.

**Art. N°: 230-1050-000**  
**RRP CHF 88.50**

- Volume (Green LED) & Expression (Red LED) Modes
- Inputs: One - 1/4"
- Connects directly to the MS-4 4-button footswitch input on the Mustang GT, III, IV, V, and to the EXP-1/MS-4 input on the Mustang Floor
- Contains a pass-through jack that allows you to daisy chain the MS-4 4-button footswitch







**GEM BOX 200**  
**AMP MODELLING &**  
**MULTI-EFFECTS**

**Art. N°: GE200**  
**RRP CHF 439.00**

- 55 high quality amplifier models
- 26 IR speaker cab models and added support for 3rdparty IR
- 70 high quality effects. Including Compressors, drives, noise gates, eq's, modulation, pitch, filters, delays and reverbs
- 52 second looper
- Drum machine with 40 drum patterns and 10 metronome rhythms.
- Store & recall up to 200 Presets
- USB connectivity
- Auxiliary input and dedicated headphone output



**PE100**  
**PORTABLE GUITAR EFFECT**

**Art. N°: PE100**  
**RRP CHF 99.00**

- 99 Factory presets and 99 user presets
- 6 effect blocks containing 39 different effects
- 40 drum patterns and 10 metronomes
- Tap tempo functionality
- 4 quick recall preset slots
- Very small compact size
- Touch panel operation
- Can be operated by battery or DC power supply



**HUSTLE DRIVE**  
**DISTORTION**

**Art. N°: MDS2**  
**RRP CHF 79.00**

- Ultra wide dynamic range and extraordinary open tube-like drive sound
- 2 Working Modes: HP/LP
- HP: High peak mode, boost up the bottomend, get more volume and a slight increase in high-mid range (around 3.5KHz)
- LP: Low peak mode, color up extreme little to the original sound, very nice for clean boosting
- Very small and exquisite
- Full metal shell
- True bypass



**SOLO**  
**DISTORTION**

**Art. N°: MDS5**  
**RRP CHF 85.00**

- All-sided high-gain distortion with excellent dynamic response and definition, especially suit for solo playing
- 3 Working Modes: Natural/Tight/Classic
- Full metal shell
- Very small and exquisite
- True bypass



**ULTRA DRIVE MKII**  
**DISTORTION**

**Art. N°: MDS6**  
**RRP CHF 85.00**

- 3 Working Modes: Original/Extra/Ultra
- Original: Provide a strong and hard edge distortion sound with low noise level.
- Extra: For high gain, and more tube like distortion.
- Ultra: For a fatter drive tone, and a wider distortion range.
- Full metal shell
- Very small and exquisite
- True bypass



**BLUES CRAB**  
**OVERDRIVE**

**Art. N°: MBD1**  
**RRP CHF 79.00**

- Classic blues overdrive sound characteristic
- Full metal shell
- Very small and exquisite
- True bypass



**ENSEMBLE KING**  
CHORUS

**Art. N°: MCH1**  
RRP CHF 85.00

- Pure analog chorus sound
- Full metal shell
- Very small and exquisite
- True bypass



**REPEATER**  
DIGITAL DELAY

**Art. N°: MDL1**  
RRP CHF 105.00

- 3 Working Modes: Mod/Normal/Kill Dry
- Kill Dry function for using in the parallel FX loop
- Delay Time: 25ms~1000ms
- Full metal shell
- Very small and exquisite
- True bypass



**VARIMOLO**  
TREMOLLO

**Art. N°: MTR2**  
RRP CHF 105.00

- High quality digital tremolo pedal with three different tremolo modes: Normal/Filter/Variable
- Normal: A normal tremolo effect
- Filter: Adds a sweeping filter sound to tremolo effect
- Variable: Adds rhythmic variations to tremolo effect
- A wide range of adjustment options :RATE, SHAPE and DEPTH knobs
- Tiny size
- True Bypass



**MICRO BUFFER**  
BUFFER

**Art. N°: MBF1**  
RRP CHF 85.00

- Accurate copy of the input signal frequency and removal of unconventional signal frequency, which perfectly output the original signal to the next pedal, thus obtaining the original musical sound
- Equipped with a High-cut (4.5kHz) & Low-cut (140Hz) switch and a Boost knob, making the Micro Buffer feature richer and more convenient to use



**MICRO DI**  
DI Box

**Art. N°: MDI1**  
RRP CHF 94.00

- Smart direct input box with ultra low distortion, it quietly transfers the sound of guitar or bass directly to the audio system
- Balanced/unbalanced output, gain switch, cabinet simulator and ground lift function included
- Full metal shell
- Very small and exquisite



**PITCH BOX**  
HARMONY/PITCH SHIFT

**Art. N°: MPS1**  
RRP CHF 94.00

- 3 Effects Modes: Harmony, Pitch Shift, Detune
- Harmony: shifts the pitch and mixes it back to create a rich harmonic voice.
- Pitch Shift: Outputs a precise polyphonic pitch shifting voice.
- Detune: It slightly shifts the pitch and mixes it back to create a chorus-like effect
- Precise polyphonic pitch shifting
- $\pm 2$  Oct Pitch Range (16 para.)



**SLOW ENGINE**  
SLOW MOTION

**Art. N°: MSG1**  
RRP CHF 105.00

- A unique effect which almost seems to slow the sound down. Sounds like a violin on steroids.
- Sensitivity and attack knobs help the player control the sounds
- Full metal shell
- Very small and exquisite
- True bypass



**RADAR**  
SPEAKER CAB SIMULATOR

**Art. N°: MSS1**  
RRP CHF 199.00

- 30 different speaker cab models
- 11 mic models
- 4 power amp models
- Customizable EQ stage
- Capable of loading custom IRS
- Store & recall up to 36 user presets
- Connect to PC editor via USB
- USB connectivity for PC editing and direct audio recording to computer
- Supports headphones & lineout



**TRECAB**  
CAB. SIMULATED

**Art. N°: MTC1**  
**RRP CHF 105.00**

- High-quality digital Cab simulated pedal, offers five different types of cab choices
- Can select two-stall balanced adjustment & microphone pick up location with the mode switch
- Cab Models: 1x8 Combo / 1x10 Combo / 1x12 Open / 2x12 Open / 4x12 Close



**TENDER OCTAVER**  
PROFESSIONAL PRECISE  
OCTAVE

**Art. N°: TOC1**  
**RRP CHF 219.00**

- Separate volume, tone and pitch controls for both sub and upper octaves
- Smooth control for automatic volume swells
- External connexion for expression pedal to control octave pitches
- Store and recall up to 4 user presets
- Stereo outputs

### MINI-WAH SERIES



**THE WAHTER**  
WAH

**Art. N°: WCW1**  
**RRP CHF 139.00**

- Recreate the vocal sweep and lush harmonics of the classic Wah tone.
- Solid metal shell with a mechanism that will last for years.
- Equipped with MOOER's unique pressure sensing switch design and normal footswitch for traditional activation mode.
- Small enough to put on any pedalboard
- Pedal extension rings to make the pedestal more comfortable



**PHASER PLAYER**  
EXPRESSION PHASER

**Art. N°: WPH1**  
**RRP CHF 115.00**

- Phaser Player is a high quality Phaser with 3 different tones
- 3 different types of switching.
- Expression pedal controls rate of Phase filter
- Equipped with MOOER's unique pressure sensing footswitch



**REDKID**  
DIGITAL TALK WAH

**Art. N°: WTW1**  
**RRP CHF 115.00**

- Talk wah replicates the tonal qualities of the human voice and can bring new inspiration to your music.
- The RED KID has 2 different TALK modes, each with a different vocal sound.
- Equipped with MOOER's unique pressure sensing footswitch.
- True Bypass switching.





**GAS STATION**  
BASED ON DIEZEL® HAGEN  
**Digi. Micro PreAmp**

**Art. N°: M001**  
**RRP CHF 119.00**

- High-quality dual channel preamp
- Independent 3 band EQ, Gain & Volume controls for each channel
- Speaker cabinet simulation on/off
- 2 different modes for footswitch operation. On/Off or channel A/B
- 001 is based on Diezel® Hagen



**UK GOLD 900**  
BASED ON MARSHALL® JCM900  
**Digi. Micro PreAmp**

**Art. N°: M002**  
**RRP CHF 119.00**

- High-quality dual channel preamp
- Independent 3 band EQ, Gain & Volume controls for each channel
- Speaker cabinet simulation on/off
- 2 different modes for footswitch operation. On/Off or channel A/B
- 002 is based on Marshall® JCM900



**POWER ZONE**  
BASED ON KOCH® POWER TONE  
**Digi. Micro PreAmp**

**Art. N°: M003**  
**RRP CHF 119.00**

- High-quality dual channel preamp
- Independent 3 band EQ, Gain & Volume controls for each channel
- Speaker cabinet simulation on/off
- 2 different modes for footswitch operation. On/Off or channel A/B
- 003 is based on Koch® Power Tone



**DAY TRIPPER**  
BASED ON VOX® AC30  
**Digi. Micro PreAmp**

**Art. N°: M004**  
**RRP CHF 119.00**

- High-quality dual channel preamp
- Independent 3 band EQ, Gain & Volume controls for each channel
- Speaker cabinet simulation on/off
- 2 different modes for footswitch operation. On/Off or channel A/B
- 004 is based on VOX® AC30



**FIFTY-FIFTY**  
BASED ON EVH® 5150  
**Digi. Micro PreAmp**

**Art. N°: M005**  
**RRP CHF 119.00**

- High-quality dual channel preamp
- Independent 3 band EQ, Gain & Volume controls for each channel
- Speaker cabinet simulation on/off
- 2 different modes for footswitch operation. On/Off or channel A/B
- 005 is based on EVH® 5150



**US CLASSIC DEL.**  
BASED ON FENDER® BLUES DEL.  
**Digi. Micro PreAmp**

**Art. N°: M006**  
**RRP CHF 119.00**

- High-quality dual channel preamp
- Independent 3 band EQ, Gain & Volume controls for each channel
- Speaker cabinet simulation on/off
- 2 different modes for footswitch operation. On/Off or channel A/B
- 006 is based on Fender® Blues Deluxe



**REGAL TONE**  
BASED ON TONEKING® FALCON  
**Digi. Micro PreAmp**

**Art. N°: M007**  
**RRP CHF 119.00**

- High-quality dual channel preamp
- Independent 3 band EQ, Gain & Volume controls for each channel
- Speaker cabinet simulation on/off
- 2 different modes for footswitch operation. On/Off or channel A/B
- 007 is based on ToneKing® Falcon



**CALI-MK 3**  
BASED ON MESA BOOGIE® MKIII  
**Digi. Micro PreAmp**

**Art. N°: M008**  
**RRP CHF 119.00**

- High-quality dual channel preamp
- Independent 3 band EQ, Gain & Volume controls for each channel
- Speaker cabinet simulation on/off
- 2 different modes for footswitch operation. On/Off or channel A/B
- 008 is based on Mesa Boogie® MKIII

## MOOER MICROAMP PREAMPS SERIES PEDALS



**BLACKNIGHT**  
BASED ON ENGL® BLACKMORE  
**Digi. Micro PreAMP**

**Art. N°: M009**  
**RRP CHF 119.00**

- High-quality dual channel preamp
- Independent 3 band EQ, Gain & Volume controls for each channel
- Speaker cabinet simulation on/off
- 2 different modes for footswitch operation. On/Off or channel A/B
- 009 is based on Mesa Engl® Blackmore



**CALI-DUAL -** BASED ON  
MESA BOOGIE® DUAL RECTIFIER  
**Digi. Micro PreAMP**

**Art. N°: M011**  
**RRP CHF 119.00**

- High-quality dual channel preamp
- Independent 3 band EQ, Gain & Volume controls for each channel
- Speaker cabinet simulation on/off
- 2 different modes for footswitch operation. On/Off or channel A/B
- 011 is based on Mesa Boogie® Dual Rectifier



**MATCHBOX**  
BASED ON MATCHLESS® C30  
**Digi. Micro PreAMP**

**Art. N°: M013**  
**RRP CHF 119.00**

- High-quality dual channel preamp
- Independent 3 band EQ, Gain & Volume controls for each channel
- Speaker cabinet simulation on/off
- 2 different modes for footswitch operation. On/Off or channel A/B
- 013 is based on Matchless® C30

## SPARK SERIES PEDALS



**SPARK ECHO**  
**DELAY**

**Art. N°: SDL2**  
**RRP CHF 119.00**

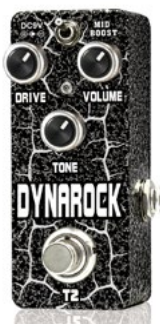
- High quality delay pedal, up to 1000 milliseconds of delay time
- Special reverb effect which can be added to the delayed signal, leaving you dry tone intact, producing unique spatial tones not available even cascading delay and reverb pedals



**SPARK OVERDRIVE**  
**OVERDRIVE**

**Art. N°: SOD1**  
**RRP CHF 105.00**

- 80's vintage overdrive tone perfectly suited for Blues, Old Rock and many more styles
- Can be used with amplifier as a boost, can also be used alone



**DYNAROCK**  
DISTORTION

**Art. XV-T2**  
RRP CHF 79.00

- Open dynamic and warm pedal which comes to close to the natural tone of tube amplifiers
- Ultra high gain and great tone.
- Heavy distortion - with a tone so fat heavy pounds you down and grind you into the floor
- With a balanced gain control you can hear each strings
- Xvive DynaRock also acts as the perfect boost pedal



**GOLDEN BROWNIE**  
DISTORTION PEDAL

**Art. N°: XV-T1**  
RRP CHF 79.00

- The Marshall JCM800 tones in a box.
- Unbelievable range of overdrive to head-on heavy grind, with easily enough Gain for any sane type of metal.
- Transforms any amp into a fire breathing Monster!
- Really good blues Tone



**CLASSIC ROCK**

**Art. N°: XV-V1**  
RRP CHF 59.00

- TRUE BYPASS
- Earphone attached
- Level/Tone /Gain Knob
- Connectors: Input jack, Output jack
- DC Input, Earphone Jack
- Power Requirements:9V DC
- Current Draw:10 mA
- Size: 46(W) x94(D) x50 H)mm

LAST ONES



**DISTORTION**

**Art. N°: XV-V2**  
RRP CHF 59.00

- High gain distortion
- Easy tone, volume and gain control
- Wide gain range; light "crunch" to total "saturation"
- Excellent dynamic response
- True Bypass circuitry

LAST ONES



**METAL**  
DISTORTION

**Art. N°: XV-V3**  
RRP CHF 59.00

- Heavy saturation distortion
- Tight bass, scooped mids, cutting highs
- Wide range – from dark chugging riffage to all-out shred soloing
- Excellent dynamic response
- True Bypass circuitry

LAST ONES



**TUBE SQUASHER**  
OVERDRIVE

**Art. N°: XV-O1**  
RRP CHF 75.00

- Emulate the smooth overdrive characteristics of a good vacuum tube amp.
- The low cut switch will give a more clear, transparent sound.
- More dynamic range and headroom with tight bass tones.
- It's a low to medium gain overdrive.

LAST ONES



**SWEET LEO**  
OVERDRIVE

**Art. XV-O2**  
RRP CHF 76.00

- Blend a cleaner more elegant overdrive characteristic with shimmering bell type hi-end known from Class A tube amplifiers, to the raunchy and "dirty" overdrive sound, known from cranked up good old tweed amps.
- Tight low end and pulsing clarity even on high gain settings
- Roll back the level pulling the volume on the tone for a clean boost

LAST ONE



**TUBE DRIVE**  
OVERDRIVE

**Art. N°: XV-V7**  
RRP CHF 62.00

- Wide dynamic range tube overdrive
- Vary from vacuum tube like overdrive effect at low DRIVE settings to screamer clipping-fuzz effect at high DRIVE settings and everything in between
- Wide range tone adjustment with excellent dynamic response
- Volume/Tone/Drive Control
- True Bypass circuitry



LAST  
ONES



**PHASER KING**  
PHASER

**Art. N°: XV-V6**  
RRP CHF 69.00

- Classic Analog Phaser
- Speed/Sweep/Feedback Control
- Companding (compression/expansion) noise reduction
- Excellent dynamic response
- True Bypass circuitry



**ECHOMAN**  
ANALOG DELAY

**Art. N°: XV-V21**  
RRP CHF 149.00

- A simplified monaural version of the Memory Analog Delay
- Up to 600 msec of delay time with no aliasing distortion.
- Wide bandwidth - good high frequency response even at long delay settings
- Feedback control allows self-oscillation if desired



**MAXVERB**  
REVERB

**Art. N°: XV-D1**  
RRP CHF 99.00

- 50s Plate reverb, 60s Spring reverb & the universal music hall
- Digital Reverb
- Constant Volume Curve
- Blend control - fully dry to fully wet
- Reverb Mode Toggle Switch
- Excellent dynamic response
- True Bypass circuitry



**UNDULATOR**  
STEREO TREMOLO

**Art. N°: XV-V16**  
RRP CHF 107.00

- Warm, rich, wide range tremolo effect
- True stereo spectrum of sound with two amps
- Sine, trapezoid and square wave modulation
- Dual Output channels - stereo/mono
- Speed/shape/depth controls
- Excellent dynamic response
- True Bypass circuitry



**LEMON SQUEEZER**  
COMPRESSOR

**Art. N°: XV-V9**  
RRP CHF 69.00

- TRUE BYPASS
- 100% analog circuit design
- Distortion is kept low so good tone is maintained
- Greatly increases the sustain of guitar notes and chords
- Compresses dynamic range so all signals above the level set by the THRESHOLD are kept at about the same volume
- Power Requirements: 9V DC
- Current Draw: 100 mA
- Size (mm): 46(W) x 94(D) x 50(H)

LAST  
ONES



**MINI DI**  
DI Box

**Art. N°: XV-V13**  
RRP CHF 69.00

- Ultra low distortion, send signal directly to audio system
- XLR balanced or 1/4" unbalanced output
- On/Off Cabinet Simulator switch
- Ground lift function
- -20db/0/+20db gain settings
- True Bypass circuitry



**SINGING AUTOWAH**  
ENVELOP FILTER

**Art. N°: XV-V17**  
RRP CHF 65.00

- Double peak envelope swept filter that can be used with either a bass or a 6-string guitar
- Kicks it up a notch with a "Staccato" function that is ideal for fast picking, funk bass and tight rhythm guitar.
- "auto-reset envelope" that listens to your playing & quickly discharges the envelope between your notes.
- Power Requirements: 9V DC.



**CHROMATIC TUNER**  
PEDAL

**Art. N°: XV-PT-05**  
RRP CHF 49.00

- Without Rechargeable Battery
- Chromatic tuning mode
- Tuning Range : B0-B7
- Input + Output: 1/4" Input jack
- True bypass
- Mutes output signal when tuning
- Power: 9V DC Adapter
- Weight: 300g (including battery)



**POWER SUPPLY**

**Art. N°: XV-V19**  
**RRP CHF 96.00**

- Power up 8 multiple effects
- Avoid unwanted cable mess and noise
- 7 – 9V inputs/One – 18V input
- Flexible power configuration
- 8 individually regulated outputs
- Short circuit protection design for individual outputs
- Provides stable 9V DC & 18V power

## PROFESSIONAL PEDALS



**OVERDRIVE FUZZ**

**Art. N°: XV-W2**  
**RRP CHF 159.00**

- Overdrive and Fuzz in one with adjustable blend
- Bass and Treble Control
- Dynamic Response Control
- Wide range of effects possible
- Extremely long sustain fuzz, with a wide range of tonal adjustability
- Tube-like overdrive with gain adjustable from soft distortion to a screaming, highly compressed overdriven tube amp sound.
- True Hard Wire Bypass
- USA Design



**WAVE PHASER**

**Art. N°: XV-W1**  
**RRP CHF 159.00**

- Fully adjustable phaser
- "Intelligent" envelope detector
- Adjustable sweep pattern and feedback control
- LFO (internal low frequency oscillator) sweep control
- Wide range of effects possible
- Quiet operation with companding (compression/expansion) noise reduction circuitry.
- True Hard Wire Bypass
- USA Design



**805 OVERDRIVE**

**Art. N°: 805-OD**  
**RRP CHF 192.00**

A classic overdrive gives a subtle boost, fat crunch, or a searing tone to your solos. 3-band active EQ shapes your tone just the way you want.



**VAPOR TRAIL  
ANALOG DELAY**

**Art. N°: VAPOR-DL**  
**RRP CHF 205.00**

Vapor Trail is a studio quality analog delay pedal capable of warm, authentic vintage tones with immense clarity and presence. Knob translucent with a cool blue LED that flashes to give you visual feedback on the delay time you have selected – especially handy when you're playing live on a dimly lit stage



**PICKUP BOOSTER**

**Art. N°: PICK-BT**  
**RRP CHF 134.00**

The Pickup Booster is designed to boost your signal without altering the character of your sound, while allowing you to broaden your tone via the Resonance Switch. This pedal is for those times you need to be just a little louder, cut through the mix with more clarity, or have to play a song with a distinctive humbucker tone on a single-coil guitar.



**WISE GRIP  
COMPRESSOR**

**Art. N°: VGRIP-CP**  
**RRP CHF 223.00**

Vise Grip is a studio-grade compressor pedal designed to enhance the punch, warmth and power of your tone, without sacrificing musicality. Whether you're looking for a more punchy country twang, more sustain and articulation for your searing metal leads, or a funky rhythm "spank", the Vise Grip delivers professional results perfect for both the studio and the stage.



**SHAPE SHIFTER  
STEREO TREMOLO**

**Art. N°: TREM-SS**  
**RRP CHF 269.00**

Shape Shifter is a stereo tremolo designed to deliver the classic textures you love with the capability to render extreme effects such as helicopter chops, piano stabs, or backwards swells.





## POWER GRID DISTORTION

**Art. N°: SFX-08**  
**RRP CHF 184.00**

The Seymour Duncan SFX-08 Power Grid Distortion Pedal is a high-gain, solid state distortion stompbox capable of myriad tones, thanks to a 3-band active EQ section. The Power Grid is a perfect distortion pedal for all genres of rock.



## TWIN TUBE MAYHEM DISTORTION

**Art. N°: SFX-04**  
**RRP CHF 343.00**

A distortion pedal with a high-quality guitar preamp that includes a built-in boost. Using a duo of premium, mil-spec, subminiature, USA-made Phillips-Sylvania 62051 pentode tubes, it is a great effect pedal for old-school metal, nu metal, thrash, death, and doom.



## TWEAK FUZZ VOLUME & GAIN CONTROL

**Art. N°: SFX-02**  
**RRP CHF 242.00**

Incorporates a 6-position Tweak knob. The basic tone is a rich, lush, vintage fuzz tone, but by selecting any of the preset tone circuits and playing with the Gain knob you can create myriad unique fuzz tones. Volume, Gain, and Tweak controls. True bypass runs on 9V battery or 9V DC power supply.



## DÉJÀ VU TAP DELAY

**Art. N°: SFX-10**  
**RRP CHF 368.00**

Features Tap Tempo to match the delay time to the tempo of your music, and its Ratio Control gives you multiple delays for each press of the Tap Tempo footswitch. A tempo "Heartbeat" flashing red LED keeps everybody honest (or, at least, in time), and a Modulation control that lets you add a flange/chorus effect to the time delay.



## SHAPE SHIFTER TAP TREMOLO

**Art. N°: SFX-07**  
**RRP CHF 300.00**

The Shape Shifter pedal's sonically pure, 100% analog signal path delivers the familiar lush, hypnotic, pulsing tremolo vibes characteristic of '50s tube amps. Digital tap control offers incredible control. Shape and Wave controls provide unparalleled versatility.



# BASS GUITAR



**CRYBABY® BASS  
WAH**

**Art. N°: 105Q**  
**RRP CHF 176.00**

- Applies wah effect to highs and mids while leaving lows thick & full
- Q control lets you set the effect response from sharp to smooth
- Convenient auto-return switching so you can step in and out of the effect
- Adjustable boost up to +16dB



**CRYBABY® BASS  
MINI WAH**

**Art. N°: CBM105Q**  
**RRP CHF 176.00**

- Half the size of the 105Q
- Optimized for bass frequencies
- External Q and Volume controls
- Auto-return switching
- Lightweight aluminum housing



**BASS DISTORTION  
D.I.+**

**Art. N°: M80**  
**RRP CHF 223.00**

- XLR direct out for clear live performances and recordings
- Distortion channel with gain, volume, and blend controls
- Color switch for added fatness
- 3-band EQ and phantom power



**BASS DISTORTION  
D.I.+ YELLOW**

**Art. N°: M80Y**  
**RRP CHF 188.00**

- All the gigging and recording essentials in one box
- D.I. for high-quality direct signal
- Preamp and finely tuned EQ adds punch and character
- Distortion channel for rich, gnarly grit
- XLR and parallel 1/4 outputs and phantom power switch for any circumstance
- Special edition finish



**BASS DISTORTION**

**Art. N°: M85**  
**RRP CHF 176.00**

- Co-designed with Fuzzrocious Pedals' Ryan Ratajski
- Based on a famously nasty distortion circuit
- Separate Dry & Wet level controls
- Select Silicon or LED diodes to change clipping character
- Internal control sets the max output level of LED mode



**BASS FUZZ DELUXE**

**Art. N°: M84**  
**RRP CHF 176.00**

- A rare vintage fuzz circuit modified for the modern bassist
- Tone control affects only the fuzz signal, leaving your direct signal clean and clear
- Separate Dry and Fuzz controls for tonal versatility
- Delivers a bold and cutting fuzz tone while retaining clarity and punch
- Analog circuitry for rich organic tone



**BASS OVERDRIVE**

**Art. N°: M89**  
**RRP CHF 176.00**

- A unique overdrive circuit designed specifically for bass
- Separate clean + drive controls for tonal versatility
- 100% analog circuitry for rich warm tone



**VINTAGE BASS  
OCTAVE MINI**

**Art. N°: M280G1**  
**RRP CHF 188.00**

- Upgrades the warm analog sub-bass vibes of a classic circuit with superior tracking, cleaner headroom, and the versatility that modern players demand, delivering an impressive range of sounds in the lightweight, space-saving MXR mini housing.





## SUB OCTAVE BASS FUZZ

Art. N°: M287  
RRP CHF 235.00

- Combines two switchable fuzz flavors with a growling sub octave signal
- Separate Dry volume control ensures clean low end retention
- Bass and Treble controls allow you to fine-tune your fuzz signal
- Mid Level control allows you to boost your clean midrange to cut through the mix



## BASS OCTAVE DELUXE

Art. N°: M288  
RRP CHF 200.00

- 2 independent sub-octave voices
- MID+ switch adds mid range boost
- Constant Headroom Technology™ for exceptional headroom and tracking
- Organic analog tone
- True bypass



## BASS CHORUS DELUXE

Art. N°: M83  
RRP CHF 223.00

- Chorus and Flanger modes
- Analog bucket brigade technology
- Separate Bass + Treble controls for detailed tone sculpting
- X-OVER mode for increased low end clarity
- Constant Headroom Technology™



## BASS PREAMP

Art. N°: M81  
RRP CHF 212.00

- 3-Band EQ with sweepable mid-range
- Studio-quality Direct Out
- Constant Headroom Technology™ for clean, crystal clear tone



## BASS ENVELOPE FILTER

Art. N°: M82  
RRP CHF 199.00

- Classic envelope filter sounds
- All-analog circuitry for rich, organic tone
- Separate DRY and FX level controls for preserving low end
- True bypass



## BASS ENVELOPE FILTER BLACKOUT SERIES

Art. N°: M82B  
RRP CHF 199.00

- Celebrating the 15th anniversary of the world's bestselling bass pedal line
- Two most popular MXR bass pedals dressed in a matte black stealth finish with gloss black text and a bright yellow LED
- The MXR Bass Envelope Filter delivers classic analog envelope filter sounds while retaining your low end
- **LIMITED EDITION GLOBAL AVAILABILITY: 1500**



## BASS COMPRESSOR

Art. N°: M87  
RRP CHF 235.00

- Classic studio compressor in a Phase 90-sized pedal
- CHT™ Constant Headroom Technology for clear, clean performance
- Ten Gain Reduction status LEDs
- True bypass



## BASS COMPRESSOR BLACKOUT SERIES

Art. N°: M87B  
RRP CHF 235.00

- Celebrating the 15th anniversary of the world's bestselling bass pedal line
- Two most popular MXR bass pedals dressed in a matte black stealth finish with gloss black text and a bright yellow LED
- The MXR Bass Compressor captures all the functionality of an iconic studio compressor in pedal form
- **LIMITED EDITION GLOBAL AVAILABILITY: 1500**



## BASS INNOVATIONS



### THUMP BASS PREAMP

**Art. N°: M281**  
**RRP CHF 176.00**

- All the tone-sweetening versatility bass players need in an MXR mini housing
- Combines the Echoplex Preamp with a three-band EQ and mid-frequency adjustment
- Punch up a solo, boost your live signal, or sculpt a more aggressive edge onto a passive sound



### DYNA COMP® BASS COMPRESSOR MINI

**Art. N°: M282G1**  
**RRP CHF 176.00**

- Retain the low end, dynamics, and transparency that bass players require
- Clean control adds in your unaffected so that you can maintain low end integrity
- Tone control adjusts upper mid-range to retain the tonal dynamics of your bass

## WAY HUGE ELECTRONICS



### PORK & PICKLE BASS OVERDRIVE & FUZZ

**Art. N°: WHE214**  
**RRP CHF 200.00**

- Combines 2 great bass-friendly effects in a single housing
- The Pork Loin OD circuit provides warm, soft-clipping overdrive
- Russian-Pickle Fuzz provides thick, fatty fuzz
- Blend a sauced up clean signal with either circuit
- Control interface offers a wide range of tweakable tones



### SMALLS PORK & PICKLE BASS OVERDRIVE & FUZZ

**Art. N°: WM91**  
**RRP CHF 223.00**

- Combines two great bass-friendly effects in a single housing
- The Pork Loin OD circuit provides warm, soft-clipping overdrive
- Russian-Pickle Fuzz provides thick, fatty fuzz
- Blend a sauced up clean signal with either circuit
- Control interface offers a wide range of tweakable tones

*Fender*



### DOWNTOWN EXPRESS BASS STATION

**Art. N°: 023-4538-000**  
**RRP CHF 249.00**

- High-gain distortion effect pedal
- Onboard 3-Band EQ; Texture and Bite switches
- Up to 12dB switchable Boost
- Magnetically latched hinged 9V battery door
- LED-backlit knobs; Fender Amp Jewel LED

**MAD PROFESSOR**



### SNOW WHITE AUTO WAH GB

**Art. N°: MP-SAW**  
**RRP CHF 189.00**

Tuned like a real wah. It has very fast tracking and accuracy rarely found auto wahs/envelope filters. Also the pedal has a unique decay control for the filter frequency fall speed. You can set it to be fast for wah effects on every note or slower for a more traditional wah sound. By experimenting with the four knobs you can find a lot of different tones suitable for your guitar and playing style.

**MUGER**



### FOG Bass Fuzz

**Art. N°: MFZ4**  
**RRP CHF 85.00**

- Classic bass fuzz tone, also sounds good on guitar
- SQUEEZE knob for shaping unique fuzz tone
- Full metal shell
- Very small and exquisite
- True bypass

**XVIVE**



### BASS SQUEEZER

**Art. N°: XV-B1**  
**RRP CHF 59.00**

- Smooth studio/live sound
- Increased sustain of bass guitar
- Compresses dynamic range
- Volume/Distortion/Compression -Blend Controls
- On/Off Distortion toggle switch
- Special design bass circuitry
- 100% Analog design with True Bypass circuitry



**PARANORMAL BASS  
EQ DIRECT BOX**

**Art. N°: SFX-06**  
**RRP CHF 218.00**

- Active DI with three-band EQ optimized for bass
- Dedicated contour switch for slapping styles
- Solid construction, balanced XLR out and ground lift
- Balanced XLR output with ground lift
- Bypass footswitch
- LED lights for both footswitches



**STUDIO BASS  
COMPRESSOR**

**Art. N°: BASS-CP**  
**RRP CHF 192.00**

The Studio Bass Compressor is a studio-grade, classic compressor in a user friendly 4 knob format. Our unique Blend knob and 3 way mini-toggle switch will allow you to select the frequency range of the original uncompressed signal as well as infinitely adjust the amount of “wet” versus “dry” signal that is routed to the output





# PERCUSSION PEDALS

LAST  
ONE



## RATTLEBOX BACKBEAT STOMPER

**Art. N°: RATTLEBOX**  
**RRP CHF 239.00**

It has been designed to augment and enhance any acoustic artist, percussionist or band performance by adding the accompaniment of a snare drum or side stick.

It can be used as foot percussion in conjunction with the Prolog for example, played with sticks or brushes, or indeed with your hands.

- Hand-made in UK from certificated Sapele & Baltic Birch .
- Requires no batteries.
- Very low angle for stress-free stomping
- Dimensions: 292 X 130 X 50 mm
- Weight: 600g



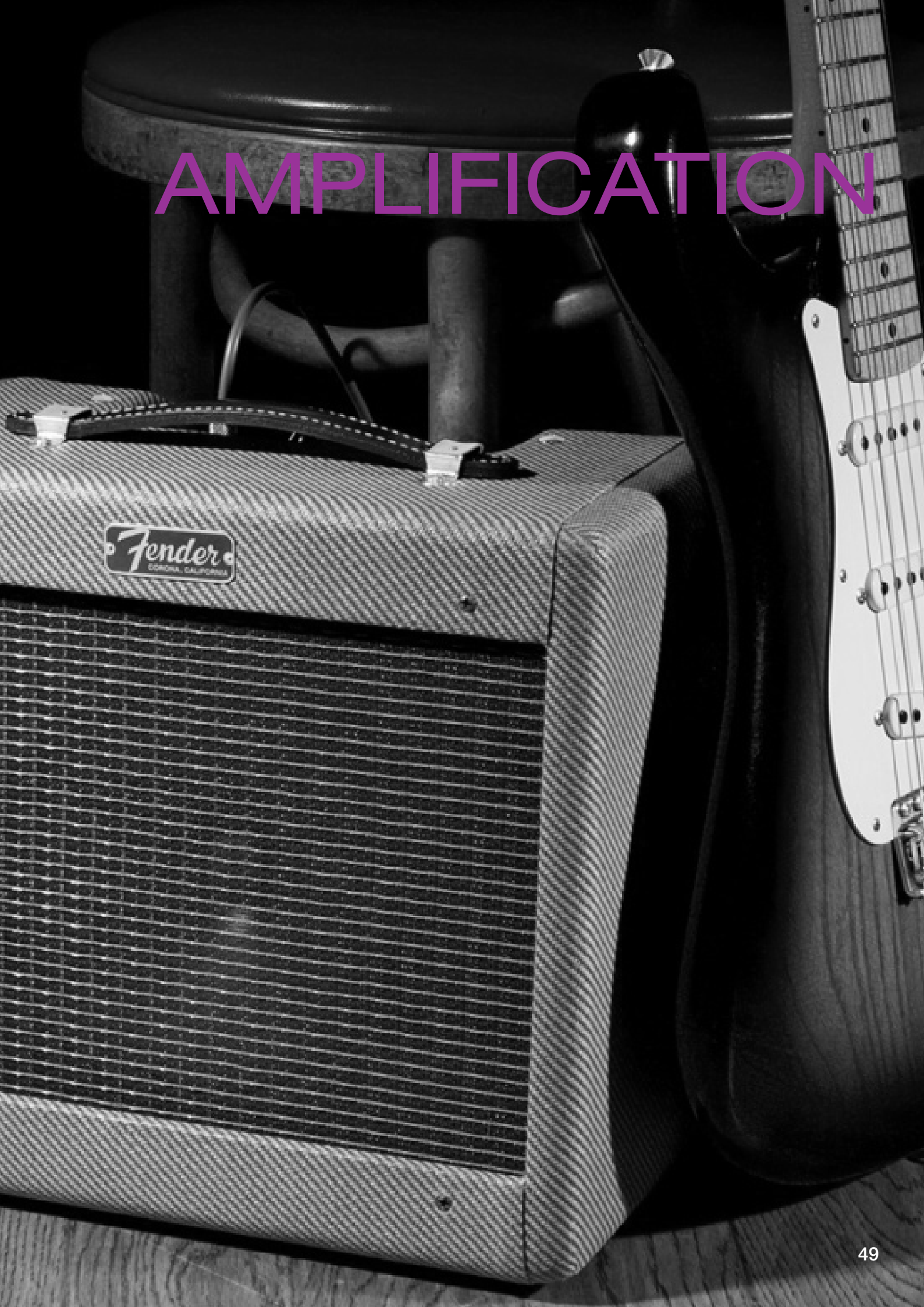
LAST  
ONES

## STOMP BOX DISPLAY 4 SHELF

**Art. N°: LOG DISPLAY**  
**RRP CHF 39.00**

Pedals not included!

# AMPLIFICATION





## Fender MINI AMPLIFIERS



**MINI TONE MASTER  
HEAD & BOX**

**Art. N°: 023-4808-000**  
**RRP CHF 79.00**

A miniaturized version of the classic Tone-Master. It boasts glorious tone considering its minuscule size. Cab corners, retro grille cloth, and vintage white control knobs.

- 1-watt single-channel amplifier
- Dual 2" speakers
- Tone, volume + gain controls
- 1/4" headphone jack + 9V adapter jack
- Dimensions: 120 mm x 170 mm x 58 mm



**MD20 MINI  
DELUXE™ AMP**

**Art. N°: 023-4810-000**  
**RRP CHF 79.00**

From the functional "dogbone" handle to the chrome control plate and mini "chicken head" knobs, this one is a surefire collector's item! It's still got the tone, too!

- 1-watt single-channel amplifier
- Dual 2" speakers
- Tone, volume + gain controls
- 1/4" headphone jack and 9V adapter jack
- Dimensions: 150 mm x 115 mm x 70 mm



**MD20 MINI  
DELUXE™ AMP RED**

**Art. N°: 023-4810-009**  
**RRP CHF 79.00**

From the functional "dogbone" handle to the chrome control plate and mini "chicken head" knobs, this one is a surefire collector's item! It's still got the tone, too!

- 1-watt single-channel amplifier
- Dual 2" speakers
- Tone, volume + gain controls
- 1/4" headphone jack and 9V adapter jack
- Dimensions: 150 mm x 115 mm x 70 mm



**MINI '57 TWIN-AMP™**

**Art. N°: 023-4811-000**  
**RRP CHF 79.00**

Captures the vibe of '50s era Fender®. For the player who can't afford a real or reissue tweed amp, this lets them buy their piece of Fender history!

- 1-watt single-channel amplifier
- Dual 2" speakers
- Tone, volume + gain controls
- Built-in distortion
- 1/4" headphone jack and 9V adapter jack
- Dimensions: 290 mm x 190 mm x 90 mm



**MINI '65 TWIN-AMP™**

**Art. N°: 023-4812-000**  
**RRP CHF 79.00**

From the black control plate and miniature knobs to the silver grille cloth, it replicates the classic look of the full-size Twin amp. Plug in and tap into Fender tone at a fraction of the size.

- 1-watt single-channel amplifier
- Two 3" speakers
- Tone, volume + gain controls
- Tilt-back kickstand & belt clip
- 1/8" headphone jack and 9V adapter jack
- Includes 9V battery



## ACOUSTIC AMPLIFIERS



**GODIN ACOUSTIC  
SOLUTIONS ASG-8  
BLACK - 120 WATT**

**Art. N°: GO-ASG-8-Black**  
**RRP CHF 790.00**

- Power: 120 Watts
- Channels: 2
- Inputs: 2x 1/4" Jack & XLR, 1x AUX 1/8" mini-jack
- Outputs: 1x Footswitch, 1x Headphones Out, 1x Mix D.I. Out
- Phantom Power: Yes
- Speaker: 8" Woofer, 1" Tweeter.
- Monitor Type: Slanted
- DSP Effects: Reverb, Echo, Flanger, Chorus (2 types)
- Bluetooth 4.0: Yes
- Finish : Black



**GODIN ACOUSTIC  
SOLUTIONS ASG-8  
WOOD - 120 WATT**

**Art. N°: GO-ASG-8-Wood**  
**RRP CHF 790.00**

- Power: 120 Watts
- Channels: 2
- Inputs: 2x 1/4" Jack & XLR, 1x AUX 1/8" mini-jack
- Outputs: 1x Footswitch, 1x Headphones Out, 1x Mix D.I. Out.
- Phantom Power: Yes
- Speaker: 8" Woofer, 1" Tweeter.
- Monitor Type: Slanted
- DSP Effects: Reverb, Echo, Flanger, Chorus (2 types)
- Bluetooth 4.0: Yes
- Finish : Wood



# AMP HEADS



**BABY BOMB 30**  
**30W Digital Micro**  
**Power Amp**

**Art. N°: BB30**  
**RRP CHF 159.00**

- 30 Watt maximum power output
- Master volume control can provide smooth post stage overdrive
- WARM/BRIGHT switch to adjust the power stage presence
- Built in overcurrent protection
- Can be connected to speaker cabinets with a load of 8 or 16 Ohm



**LITTLE TANK**  
**Mini Digital Guitar**  
**AMPLIFIER HEAD**

**Art. N°: TD15**  
**RRP CHF 299.00**

- 25 high quality digital amp models
- 20 cabinet models
- 10 modulation effects
- 5 different Delay types
- 6 different Reverb types
- 4 quick recall buttons to instantly recall your favourite presets
- Serial effects loop for perfect integration with effect pedals
- Aux in and Bluetooth capabilities
- 15-Watt D class power amp
- Dedicated controls for BASS, MID, TREBLE, GAIN & MASTER VOLUME
- 99 programmable presets
- Built-in guitar tuner



# PEDALBOARD

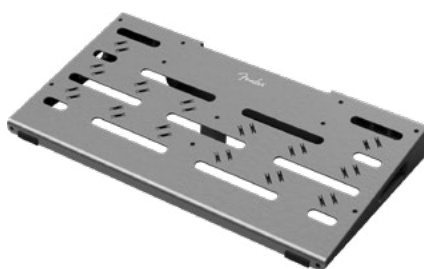




**PROFESSIONAL PEDAL-BOARD - SMALL**

**Art. N°: 099-1084-001**  
**RRP CHF 177.50**

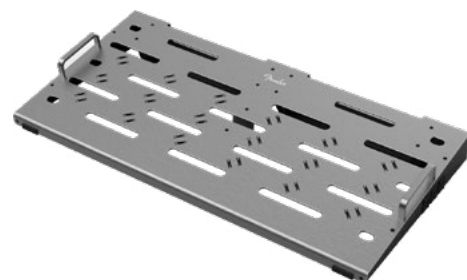
- Precision-Machined Anodized Aluminum Chassis
- Integrated Cable Routing and Management System
- Universal Power-Supply Mounting Bracket
- Strong, Lightweight and Low-Profile Design
- Included Carrycase with Storage Pocket
- Dimensions:  
Small - W 45.7cm x D 32.5cm x H 7.5cm



**PROFESSIONAL PEDAL-BOARD - MEDIUM**

**Art. N°: 099-1084-002**  
**RRP CHF 209.00**

- Precision-Machined Anodized Aluminum Chassis
- Integrated Cable Routing and Management System
- Universal Power-Supply Mounting Bracket
- Strong, Lightweight and Low-Profile Design
- Included Carrycase with Storage Pocket
- Dimensions:  
Medium - W 60.9cm x D 32.5cm x H 7.5cm



**PROFESSIONAL PEDAL-BOARD - LARGE**

**Art. N°: 099-1084-003**  
**RRP CHF 282.50**

- Precision-Machined Anodized Aluminum Chassis
- Integrated Cable Routing and Management System
- Universal Power-Supply Mounting Bracket
- Strong, Lightweight and Low-Profile Design
- Included Carrycase with Storage Pocket
- Dimensions:  
Large - W 60.9cm x D 40.6cm x H 7.5cm



**PROFESSIONAL PEDAL-BOARD CASE - SMALL**

**Art. N°: 099-6106-501**  
**RRP CHF 199.00**

- Break-away case design with removable lid for "Play-In" Option
- Includes two straps to secure pedalboard during transit
- Rubber Feet for non-slip performance
- Interior Dimensions:  
Small - W 48,1cm x D 37,4cm x H 15,2cm



**PROFESSIONAL PEDAL-BOARD CASE - MEDIUM**

**Art. N°: 099-6106-502**  
**RRP CHF 249.00**

- Break-away case design with removable lid for "Play-In" Option
- Includes two straps to secure pedalboard during transit
- Rubber Feet for non-slip performance
- Interior Dimensions:  
Medium - W 63,3cm x D 37,4cm x H 15,2cm



**PROFESSIONAL PEDAL-BOARD CASE - LARGE**

**Art. N°: 099-6106-503**  
**RRP CHF 299.00**

- Break-away case design with removable lid for "Play-In" Option
- Includes two straps to secure pedalboard during transit
- Rubber Feet for non-slip performance
- Interior Dimensions:  
Large - W 83,6cm x D 37,4cm x H 15,2cm



## GIG BAG - FOR FOOTNOTE AMPLIFIED PEDALBOARD

**Art. N°: SKB-GBFN8**  
**RRP CHF 115.00**

The SKB-GBFN8 Gig bag is the perfect way to transport the SKB-FN-8 FootNote Amplified Pedalboard. The 1SKB-GBFN8 Gig bag is constructed of heavy duty 600-denier Nylon and includes an internal plush lined, for fitted block that keeps the FootNote secure in transport. There is an outside zippered pouch that provides ample storage of cables and other accessories.



## PEDALBOARD SOFT CASE FOR PS-8 AND PS-15

**Art. N°: SKB-SC2316**  
**RRP CHF 124.00**

The SKB-SC2316 combines the protective qualities of rigid foam with the style and portability of a canvas bag.

A padded interior, padded carrying handle and shoulder strap provide lightweight portability. This Pedalboard Soft Case is designed to fit our PS-8 and PS-15 Pedalboards, but can also be used for any item with these dimensions

Dimensions - Interior: 58.42 x 40.64 x 13.97 cm



## F1 FLIGHT CASE FOR 5 MICRO PEDALS

**Art. N°: XV-F1**  
**RRP CHF 69.00**

Flight pedal case for mini pedals with 5 plug multi DC power cable



## F5 PEDALBOARD FOR 12 MICRO PEDALS

**Art. N°: XV-F5**  
**RRP CHF 89.00**

- Hand crafted real wood maple hardwood effects pedal board
- Beautiful wood finish
- Has the capacity to hold up to 12 pcs Xvive micro effect pedals
- Non-slip base
- Size: L 390mm x P 320mm x H 70mm
- Velcro include

## PEDALS FOR ELECTRIC GUITAR / DISTORTION

DUNLOP	Fuzz Face The Standard Red	JD-F2	5
	Silicon Fuzz Face Mini	FFM1	5
	Germanium Fuzz Face Mini	FFM2	5
	Band of Gypsies Fuzz Face Mini	FFM6	6
	Jimi Hendrix Fuzz Face Mini	FFM3	6
	Jimi Hendrix Fuzz Face	JH-F1	6
	Joe Bonamassa Fuzz Face Mini	FFM4	6
MXR	Prime Distortion	M69	11
	Super Badass® Distortion	M75	11
	Custom Badass™ '78 Distortion	M78	11
	Blue Box™ Octave Fuzz	M103	12
	Distortion+	M104	12
	Distortion III	M115	12
	Fullbore Metal	M116	12
	Classic 108 Fuzz	M173	12
	Sub Machine Fuzz	M225	12
	Super Badass Variac Fuzz	M236	12
	Octavio Fuzz	M267	12
	Classic 108 Fuzz Mini	M296	13
	Poly Blue Octave	M306G1	13
	Hybrid Fuzz	CSP041	18
	'68 Shrine Fuzz Face Distortion	JHMS1	19
	'68 Shrine Octavio Fuzz	JHMS2	19
	'68 Shrine Band of Gypsies Fuzz	JHMS4	19
	Dime Distortion	DD-11	20
	Slash Octave Fuzz	SF01	20
WAY HUGE	Smalls Swollen Pickle Jumbo Fuzz	WM41	21
	Smalls Stone Burner Sub Atomic Fuzz	WM81	21
	Swollen Pickle Jumbo Fuzz MKIIS	WHE401S	23
FENDER	Pugilist Distortion	023-4534-000	26
	Duel Pugilist Distortion	023-4562-000	26
	Full Moon Distortion	023-4537-000	26
	MTG Tube Distortion	023-4539-000	26
	MTG La Tube Distortion	023-4547-000	27
	Compugilist Distortion/Compressor	023-4551-000	27
	The Pelt Fuzz	023-4542-000	27
	The Trapper Dual Fuzz	023-4545-000	27
	Hammertone Distortion	023-4570-000	29
	Hammertone Fuzz	023-4574-000	29
	Hammertone Metal	023-4575-000	30
	Fender Distortion	023-4501-000	31
MOOER	Hustle Drive	MDS2	32
	Solo	MDS5	32
	Ultra Drive MKII	MDS6	32
XVIVE	Dynarock Distortion	XV-T2	37
	Golden Brownie Distortion	XV-T1	37
	Classic Rock	XV-V1	37
	Distortion	XV-V2	37
	Metal	XV-V3	38
SEYMOUR DUNCAN	Power Grid Distortion	SFX-08	41
	Twin Tube Mayhem	SFX-04	41

## PEDALS FOR ELECTRIC GUITAR / OVERDRIVE

MXR	Boost/Overdrive MXR CAE	MC-402	11
	Custom Badass™ Modified O.D.	M77	13
	Fat Sugar Drive	M94SE	13
	GT-OD Overdrive	M193	13
	Super Badass Dynamic O.D.	M249	13
	FOD Drive	M251	13
	Sugar Drive Mini	M294	13
	Timmy Overdrive	CSP027	18
	Raijin Drive	CSP037	18
	Duke of Tone	CSP039	18
	Raw Dawg - Eric Gales Signature	EG74	20
	EVH 5150 - Eddie Van Halen Overdrive	EVH-5150	20
	Tom Morello Power 50 Overdrive	TBM1	20
	Dookie Drive III	DD25V3	20
	Dookie Drive IV	DD25V4	20
WAY HUGE	Smalls Conspiracy Theory Overdrive	WM20	21
	Smalls Green Rhino Overdrive	WM22	21
	Smalls Red Llama Overdrive	WM23	21
	Smalls STO Overdrive	WM25	21
	Smalls Supa-Lead Overdrive	WM31	22
	Saucy Box Overdrive	WHE205	22
	Overdrive	WHE205OD	22
	Green Rhino Overdrive MkIV	WHE207	23
	Purple Platypus Octidrive	WHE800	23



MAD PROFESSOR	Evolution Orange Underdrive	MP-EOU	24
	Royal Blue Overdrive	MP-RBO	24
	The Green Wonder	MP-TGW	24
	Sweet Honey Overdrive	MP-SHO	24
	Supreme Matt Schofield	MP-SMS	25
FENDER	Santa Anna	023-4533-000	27
	Hammertone Overdrive	023-4571-000	29
MOOER	Blues Crab	MBD1	32
	Spark Overdrive	SOD1	36
XVIVE	Tube Squasher	XV-O1	37
	Sweet Leo	XV-O2	37
	Tube Driver	XV-V7	37
	Overdrive Fuzz	XV-W2	39
SEYMOUR DUNCAN	805 Overdrive	805-OD	40

## PEDALS FOR ELECTRIC GUITAR / MODULATION

DUNLOP	Echoplex <i>Delay</i>	EP103	5
	Rotovibe <i>Chorus/Vibrato</i>	JD-4S	5
	Volume (X) & Expression Pedal	DVP3	5
	Volume (X) Mini & Expression Pedal	DVP4	5
	Volume (X) 8 Low Friction Band Drive	DVP5	6
	ALL CRY BABY WAH		6 - 10
Mxr	CAE WAH	MC-404	11
	Uni-vibe <i>Chorus/Vibrato</i>	M68	14
	Phase 90	M101	14
	Phase 100	M107	14
	Flanger	M117R	14
	Stereo Chorus	M134	14
	Analog Micro Chorus	M148	14
	Analog Micro Flanger	M152	14
	Carbon Copy Analog Delay	M169	14
	Talk Box	M222	15
	Analog Chorus	M234	15
	Deep Phase Mini	M279	15
	Phase 95 Mini	M290	15
	Carbon Copy® Deluxe Analog Delay	M292	15
	Carbon Copy Mini Analog Delay	M299G1	15
	Reverb	M300	15
	Tremolo	M305G1	15
	74' Vintage Phase 90	CSP026	19
	Script Phase 90	CSP101S-L	19
	'68 Shrine Uni-vibe <i>Chorus/Vibrato</i>	JHMS3	19
	Eddie Van Halen 5150 Chorus	EVH-30	20
	Phase 90 Eddie Van Halen	EVH-90	21
	Flanger Eddie Van Halen	EVH-117	21
WAY HUGE	Smalls Blue Hippo <i>Analog Chorus</i>	WM61	22
	Smalls Aqua-Puss <i>Analog Delay</i>	WM71	22
	Smalls Attack Vector <i>Phaser &amp; Envelope</i>	WM92	22
	Echo-Puss <i>Analog Delay</i>	WHE702S	23
	Supa-Puss <i>Analog Delay</i>	WHE707	23
	Atreides Analog Weirding Module	WHE900	23
MAD PROFESSOR	Deep Blue Delay	MP-DBD	24
	Snow White Auto Wah	MP-SAW	24
	Silver Spring Reverb	MP-SSR	24
FENDER	Lost Highway Phaser	023-4544-000	27
	Tread-Light Wah	023-4555-000	27
	Tread-Light Volume/Expression	023-4556-000	27
	Level Set Buffer	023-4530-000	28
	Layer Reverb	023-4532-000	28
	Mirror Image Delay	023-4535-000	28
	Bubbler Analog Chorus/Vibrato	023-4540-000	28
	Tre-Verb Digital Reverb/Tremolo	023-4541-000	28
	The Pinwheel Rotary Speaker Emulator	023-4540-000	28
	Reflecting Pool Delay/Reverb	023-4546-000	29
	Acoustic Preamp/Preverb	023-4548-000	29
	Pour Over Envelope Filter	023-4549-000	29
	MTG Tube Tremolo	023-4554-000	29
	Dual Marine Layer Reverb	023-4563-000	29
	Hammertone Chorus	023-4576-000	30
	Hammertone Delay	023-4572-000	30
	Hammertone Space Delay	023-4577-000	30
	Hammertone Flanger	023-4578-000	30
	Hammertone Reverb	023-4573-000	30
	EXP-1 Expression Pedal	230-1050-000	31

MOOER	Ensemble King Chorus	MCH1	35
	Repeater <i>Digital Delay</i>	MDL1	35
	Varimolo <i>Tremolo</i>	MTR2	35
	Micro Buffer	MBF1	35
	Tender Octaver <i>Professional Precise Octave</i>	TOC1	36
	The Wahter <i>Wah pedal</i>	WCW1	36
	Phaser Player <i>Expression Phaser</i>	WPH1	36
	RedKid <i>Talk Wah</i>	WTW1	36
	Spark Echo <i>Delay</i>	SDL2	38
	Phaser King	XV-V6	38
	Echoman <i>Analog Delay</i>	XV-V21	38
XVIVE	Maxverb <i>Reverb</i>	XV-D1	38
	Undulator <i>Stereo Tremolo</i>	XV-V16	38
	Wave Phaser	XV-W1	39
	Vapor Trail <i>Analog Delay</i>	VAPOR-DL	40
SEYMOUR DUNCAN	Shape Shifter V2 <i>Stereo Tremolo</i>	TREM-SS	40
	Déjà Vu <i>Tap Delay</i>	SFX-10	41
	Shape Shifter V1 <i>Tap Tremolo</i>	SFX-07	41

## PEDALS FOR ELECTRIC GUITAR / BOOST

DUNLOP	Echoplex Preamp	EP101	5
MXR	Boost/Line Driver MXR CAE	MC-401	11
	Boost/Overdrive MXR CAE	MC-402	11
	Micro Amp	M133	16
	Micro Amp Plus	M233	16
	Booster Mini	M293	16
	MXR X Third Man Hardware Double Down	CSP042	19
	The Green Wonder	MP-TGW	24
MAD PROFESSOR	Engager Boost	023-4536-000	28
FENDER	Pickup Booster	PICK-BT	40
SEYMOUR DUNCAN			

## PEDALS FOR ELECTRIC GUITAR / EQUALIZER

MXR	10 Band Graphic EQ	M108S	16
	6 Band Graphic EQ	M109S	16

## PEDALS FOR ELECTRIC GUITAR / COMPRESSOR

MXR	Studio Compressor	M76	17
	Dyna Comp	M102	17
	Super Comp	M132	17
	Dyna Comp Deluxe	M228	17
	Dyna Comp MINI	M291	17
	Script Dyna Comp	CSP102SL	19
	Forrest Green Compressor	MP-FGC	24
MAD PROFESSOR	Compugilist Compressor/Distortion	023-4551-000	27
FENDER	The Bend Compressor	023-4531-000	28
XVIVE	Lemon Squeezer	XV-V9	39
SEYMOUR DUNCAN	Vise Grip	VGRIP-CP	40

## PEDALS FOR ELECTRIC GUITAR / TUNER PEDAL

XVIVE	Chromatic Tuner Pedal	XV-PT-05	36
-------	-----------------------	----------	----

## PEDALS FOR ELECTRIC GUITAR / MISCELLANEOUS EFFECTS

MXR	MXR CAE Buffer	MC-406	11
	Smart Gate	M135	16
	Smart Gate Pro	M235	16
	Noise Clamp Gate	M195	17
	Clone Looper	M303G1	17
	Super Black	MP-SB	25
MAD PROFESSOR	Acoustic Preamp/Preverb	023-4548-000	29
FENDER	Gem Box 100 <i>Multi-effects processor</i>	GE100	32
	Gem Box 200 <i>Amp modelling &amp; Multi-Effects</i>	GE200	32
	PE100 <i>Portable Guitar Effect</i>	PE100	32
	Micro Buffer	MBF1	33
	Micro DI	MDI1	33
	Pitch Box	MPS1	33
	Slow Engine <i>Slow Motion</i>	MSM1	33
	Radar <i>Speaker CAB Simulator</i>	MSS1	33
	Trescab <i>Cab. Simulated</i>	MTC1	34
	Mini DI	XV-V13	38
XVIVE	Singing Autowah Envelop Filter	XV-V17	38
	Mini Iso-Brick Power Supply	M239	18

## PEDALS FOR ELECTRIC GUITAR / UTILITY

MXR	Power System MXR CAE	MC-403	11
	A/B Box	M196	17
	Tap Tempo	M199	18
	DC Brick Power Supply	M237	18
	Iso-Brick Power Supply	M238	18
FENDER	Engine Room Power Supply LVL5	023-0106-005	26
	Engine Room Power Supply LVL8	023-0106-008	26
	Engine Room Power Supply LVL12	023-0106-012	26
	2 Switch ABY Pedal	023-4506-000	31
XVIVE	Power Supply	XV-V19	39

## PEDALS FOR ELECTRIC GUITAR / MICRO PREAMPS PEDALS

MOOER	ALL MICRO PREAMPS SERIES		35 - 36
-------	--------------------------	--	---------

## PEDALS FOR BASS GUITAR

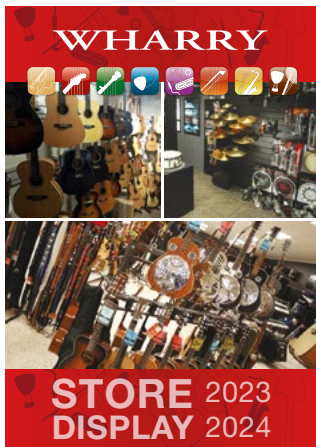
DUNLOP	Cry Baby Bass Wah	105Q	43
	Cry Baby Bass Mini Wah	CBM105Q	43
MXR	Bass Distortion DI+	M80	43
	Bass Distortion DI+ Yellow	M80Y	43
	Bass Distortion	M85	43
	Bass Fuzz Deluxe	M84	43
	Bass Overdrive	M89	43
	Vintage Bass Octave Mini	M280	43
	Sub Octave Bass Fuzz	M287	44
	Bass Octave Deluxe	M288	44
	Bass Chorus Deluxe	M83	44
	Bass Preamp	M81	44
	Bass Envelope Filter	M82	44
	Bass Envelope Filter Blackout Edition	M82B	44
	Bass Compressor	M87	44
	Bass Compressor Blackout Edition	M87B	44
	Thump Bass Preamp Mini	M281	45
	Dyna Comp Bass Compressor Mini	M282	45
WAY HUGE	Pork&Pickle Bass Overdrive & Fuzz	WHE214	45
	Smalls Pork&Pickle Bass Overdrive & Fuzz	WM91	45
FENDER	Downtown Express Distortion	023-4538-000	45
MOOER	Fog Bass Fuzz	MFZ4	45
XVIVE	Bass Squeezer	XV-B1	45
SEYMOUR DUNCAN	Paranormal Bass EQ Direct Box	SFX-06	46
	Studio Bass Compressor	BASS-CP	46

## PERCUSSION PEDALS

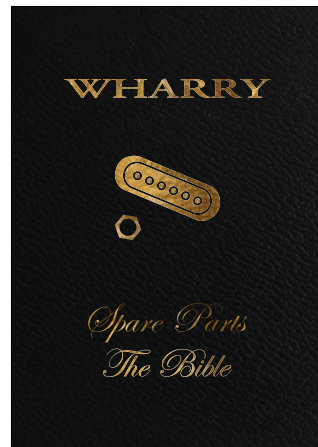
LOGJAM	Rattlebox Backbeat Stomper	RATTLEBOX	48
--------	----------------------------	-----------	----



# OUR OTHERS CATALOGS



CATALOG STORE  
DISPLAY 2023/2024



CATALOG GUITAR  
TECH 2023



CATALOG STRAPS  
2023/2024



CATALOG  
BG 2023



CATALOG LUTHIERS  
2018



CATALOG  
GUITARS 2023/2024



STEFYLINE  
GIG BAGS





# WHARRY



Riond-Bosson 13 | CH-1110 Morges 1 | Switzerland | Tél.: +41(0)21 804 66 99 | Fax: +41(0)21 804 66 96 | [www.wharry.ch](http://www.wharry.ch)

